

Homework #01

FreeBSD Installation

Announce: 20080930

Due: 20081007

FreeBSD Branches/Tags

- ◉ Three parallel development branches:
 - > -RELEASE
 - Latest Release version:
 - **7.0 February 2008, 6.3 January 2008**
 - <http://www.freebsd.org/releases/>
 - > -STABLE: Tested new features and bug fixes
 - ABI-compatibility
 - MFC: Merge From Current
 - > -CURRENT: Working space for FreeBSD developers
 - Current version:
 - **8.0-CURRENT**
 - <http://www.freebsd.org/releng/>

FreeBSD version

◎ FreeBSD-A.B.C-Type

- › A: major version Number
- › B: minor version Number
- › C: slight patch version number
- › Type: version type
 - PRELEASE
 - BETA
 - RC
 - RELEASE
 - STABLE
 - CURRENT

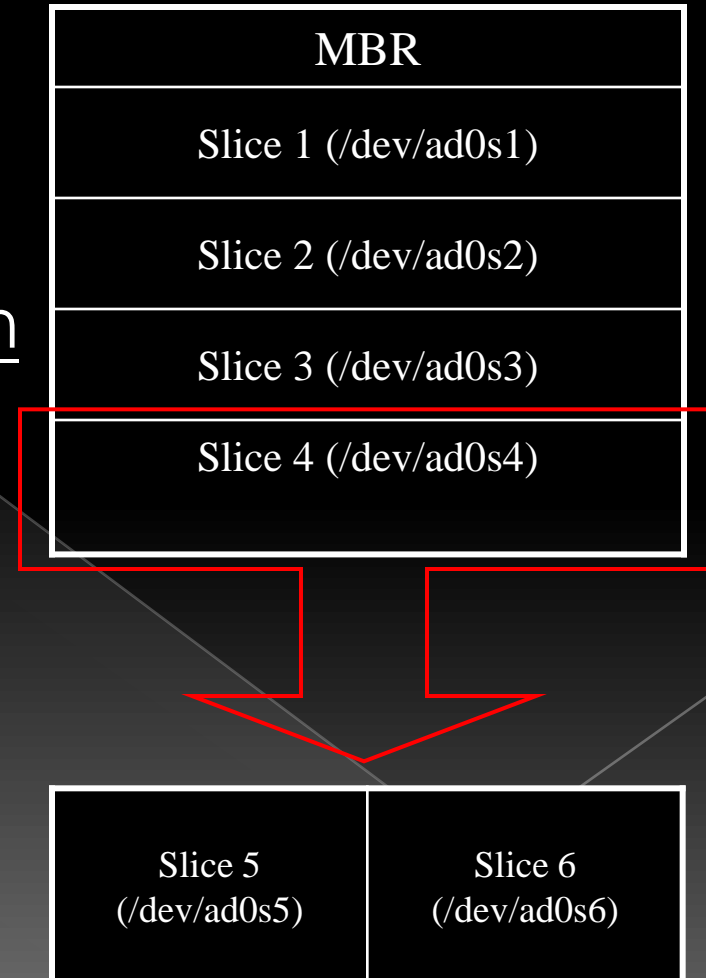
Choosing the FreeBSD Version That Is Right For You:

<http://www.freebsd.org/doc/en/articles/version-guide/index.html>

FreeBSD view of Disk (1)

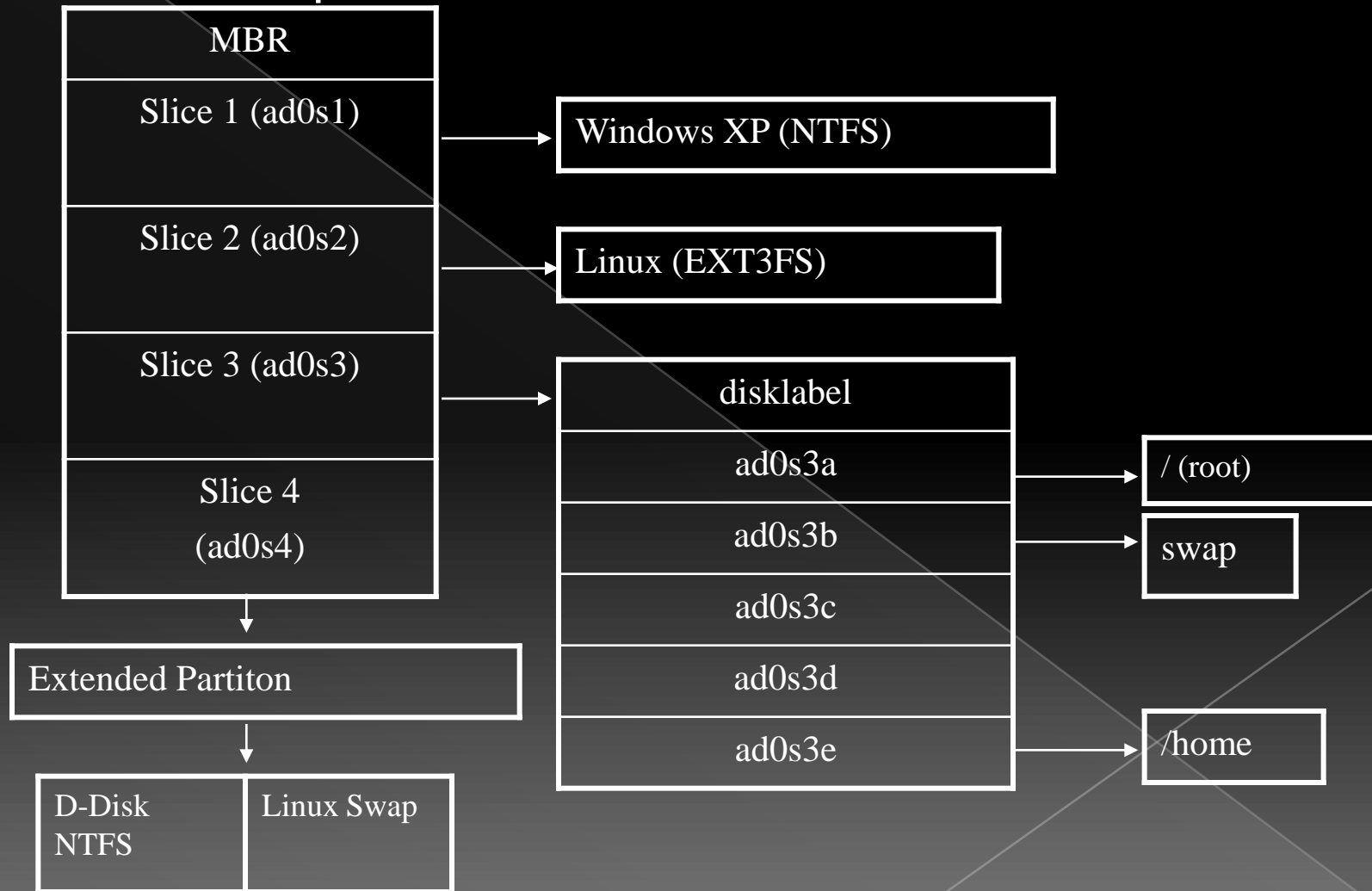
◎ The meaning of ad0s1e

- Disk name
 - IDE: ad
 - SCSI: da
- Slice is equal to the partition of common use
 - Primary partition: s1 ~ s4
 - Extended partition: s5 ~ sn
- Label in each slice
 - a: root partition
 - b: swap
 - c: entire disk
 - d: entire partition
 - efgh: /usr, /home, ...



FreeBSD view of Disk (2)

◉ An Example



Installing FreeBSD

- ◎ Steps
 1. Knowing your hardware
 2. Obtaining installation file
 3. Booting from CD
 4. sysinstall main menu
 5. Custom Installation Options
 1. Partition
 2. Label
 3. Distribution
 4. Media
 5. Commit
 6. Post Installation configurations

Installing FreeBSD –

1. knowing your hardware

- ◎ CPU
 - > 32bit or 64bit
 - > Architecture: alpha, amd64, i386, ia64, pc98, powerpc, sparc64
- ◎ RAM
 - > Size
- ◎ HD
 - > Size, amount, SCSI or IDE
- ◎ VGA
 - > Brand, ram size
- ◎ Sound
 - > Brand
- ◎ Network Interface Card
 - > Brand
 - > IP 、 Netmask 、 Default gateway 、 Hostname 、 DNS
- ◎ Other Special device

Installing FreeBSD –

2. Obtaining installation file

- ◉ FreeBSD installation CD

- > <ftp://freebsd.cs.nctu.edu.tw/pub/ISO-IMAGES-i386/7.0/7.0-RELEASE-i386-bootonly.iso>
- > <ftp://freebsd.cs.nctu.edu.tw/pub/ISO-IMAGES-i386/7.0/7.0-RELEASE-i386-disc1.iso>
- > Burn CD or USB!

- ◉ Unofficial snapshot

- > <http://pub.allbsd.org/FreeBSD-snapshots/>

Handbook!

- ◎ Chapter 2 Installing FreeBSD

- > <http://www.freebsd.org/doc/en/books/handbook/install.html>

- ◎ Chinese resources

- > <http://freebsd.doc.twbbs.org>
 - > <https://opensvn.csie.org/trac.cgi/freebsd/doc>

Booting

```
ata0 master: QEMU HARDDISK ATA-7 Hard-Disk ( 64 GBytes)
ata1 master: QEMU DVD-ROM ATAPI-4 CD-Rom/DVD-Rom
```

```
Press F12 for boot menu.
```

```
Booting from CD-Rom...
509MB medium detected
CD Loader 1.2
```

```
Building the boot loader arguments
Looking up /BOOT/LOADER... Found
Relocating the loader and the BTX
Starting the BTX loader
```

```
BTX loader 1.00  BTX version is 1.01
Consoles: internal video/keyboard
BIOS CD is cd0
BIOS drive C: is disk0
BIOS 639kB/261056kB available memory
```

```
FreeBSD/i386 bootstrap loader, Revision 1.1
(root@logan.cse.buffalo.edu, Sun Feb 24 16:31:36 UTC 2008)
Loading /boot/defaults/loader.conf
/boot/kernel/kernel text=0x6fd45c -_
```

Booting...

- Just press Enter
- “loader prompt”: some custom/special settings
Ex: loading modules, loader tunables

Welcome to FreeBSD!

1. Boot FreeBSD [default]
2. Boot FreeBSD with ACPI disabled
3. Boot FreeBSD in Safe Mode
4. Boot FreeBSD in single user mode
5. Boot FreeBSD with verbose logging
6. Escape to loader prompt
7. Reboot

Select option, [Enter] for default
or [Space] to pause timer 10



Country Selection

Just use default or...



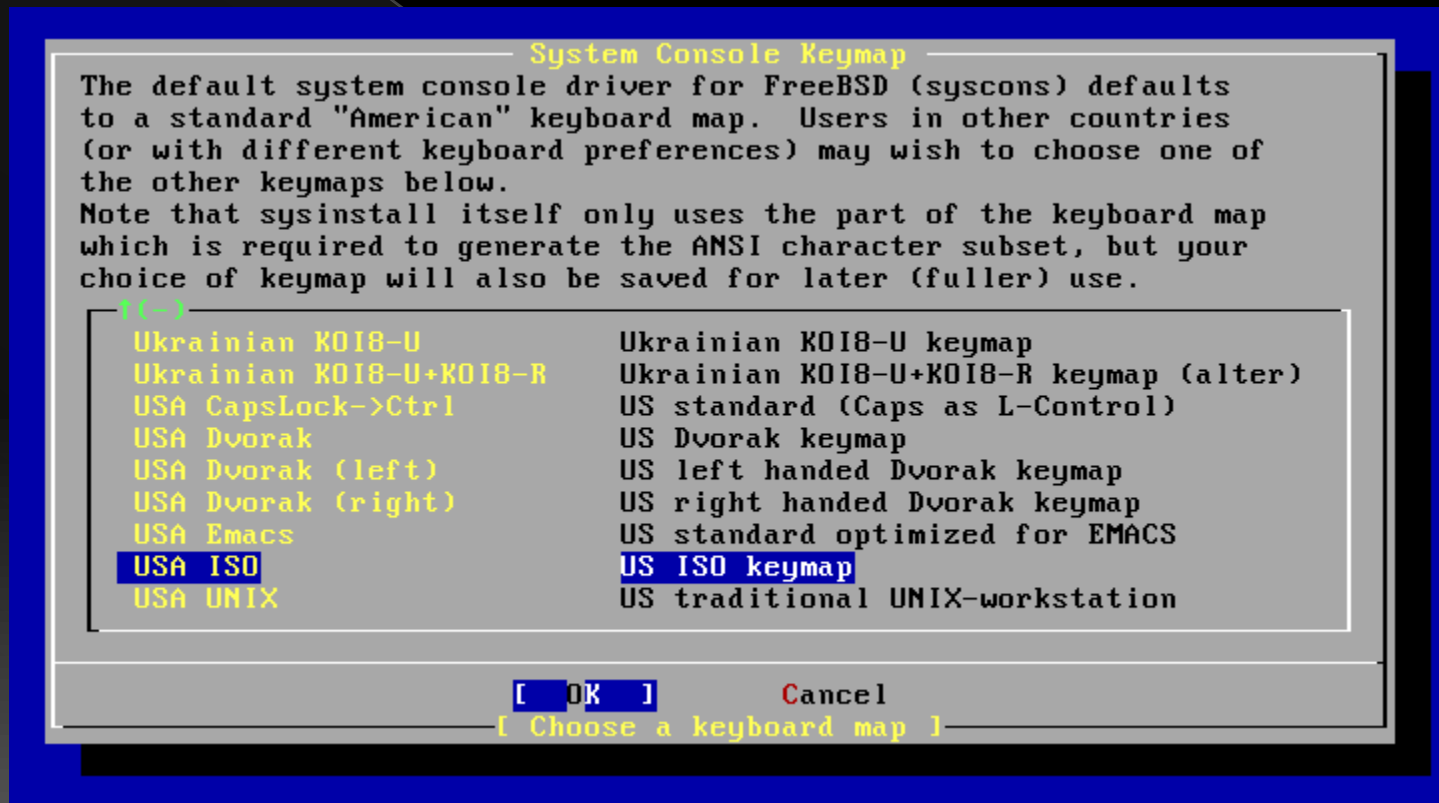
Country - Taiwan

This is loving Taiwan!



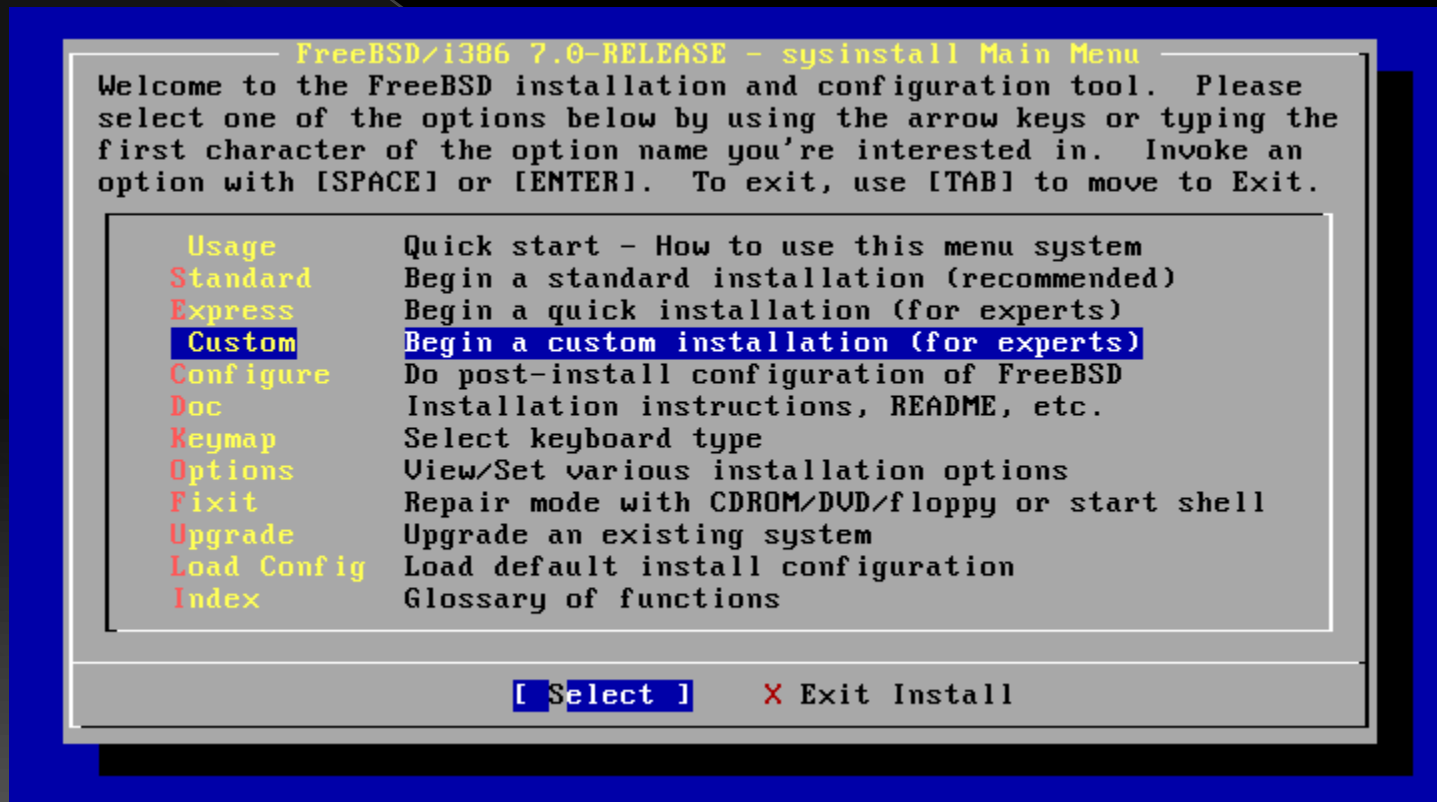
Keymap

Use USA ISO keymap because we don't have our keyboard layout...



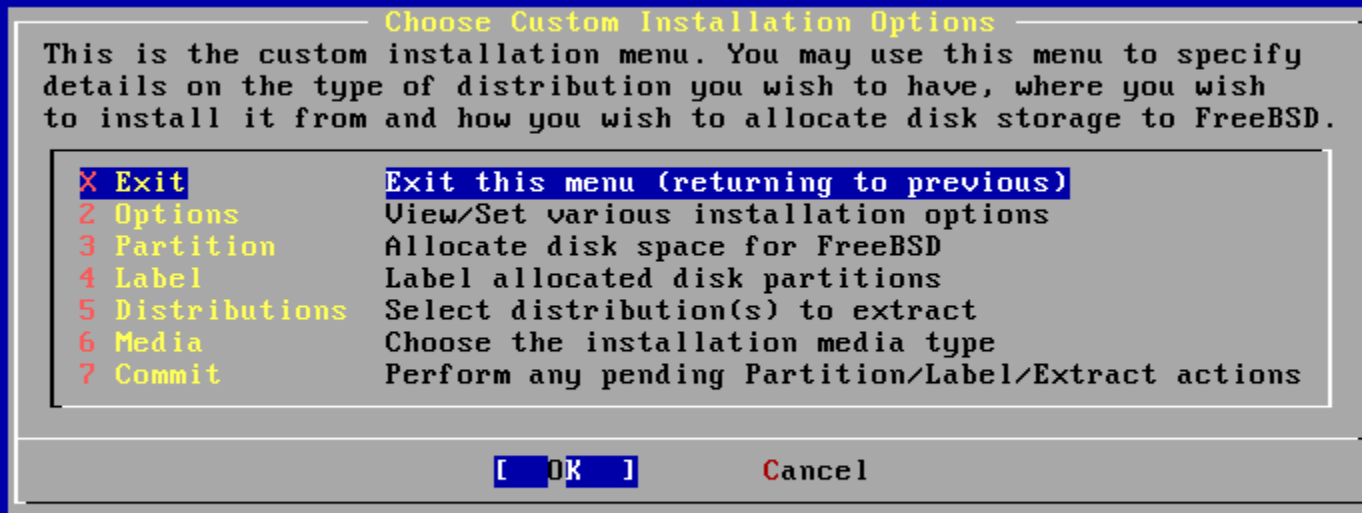
Sysinstall Main Menu

Being experts!



Custom Installation

- Installation variables
- Partition your disk
- Label your disk
- What to install
- How to install
- Do it!



Options

- Sometimes you can change “Release Name”

Options Editor

Name	Value	Name	Value
NFS Secure	NO	Install Root	/
NFS Slow	NO	Browser package	links
NFS TCP	NO	Browser Exec	/usr/local/bin/links
NFS version 3	YES	Media Type	<not yet set>
Debugging	NO	Media Timeout	300
No Warnings	NO	Package Temp	/var/tmp
Yes to All	NO	News Args	-b 16384 -f 2048
DHCP	NO	Fixit Console	standard
IPv6	NO	Re-scan Devices	<*>
Skip PCCARD	NO	Use Defaults	[RESET!]
FTP username	ftp		
Editor	/usr/bin/ee		
Tape Blocksize	20		
Extract Detail	high		
Release Name	7.0-RELEASE		

Use SPACE to select/toggle an option, arrow keys to move,
? or F1 for more help. When you're done, type Q to Quit.

NFS server talks only on a secure port

Partition

- C = Create
- D = Delete
- W = Write
- Q = Finish

Disk name: **ad0** **FDISK Partition Editor**
DISK Geometry: 8354 cyls/255 heads/63 sectors = 134207010 sectors (65530MB)

Offset	Size(ST)	End	Name	PType	Desc	Subtype	Flags
0	134217728	134217727	-	12	unused	0	

The following commands are supported (in upper or lower case):

A = Use Entire Disk	G = set Drive Geometry	C = Create Slice	F = 'DD' mode
D = Delete Slice	Z = Toggle Size Units	S = Set Bootable	I = Wizard m.
T = Change Type	U = Undo All Changes	Q = Finish	

Use F1 or ? to get more help, arrow keys to select.



Partition

Size of the partition
Default value: entire free space

Disk name: **ad0** **FDISK Partition Editor**
DISK Geometry: 8354 cyls/255 heads/63 sectors = 134207010 sectors (65530MB)

Offset	Size(ST)	End	Name	PType	Desc	Subtype	Flags
0	134217728	134217727	-	12	unused	0	

Value Required
Please specify the size for new FreeBSD slice in blocks
or append a trailing 'M' for megabytes (e.g. 20M).

134217728

The follow

[OK]

Cancel

A = Use Entire Disk G = set Drive Geometry C = Create Slice F = 'DD' mode
D = Delete Slice Z = Toggle Size Units S = Set Bootable I = Wizard m.
T = Change Type U = Undo All Changes Q = Finish

Use F1 or ? to get more help, arrow keys to select.

Partition

165 - FreeBSD's magic number

```
Disk name:      ad0                      FDISK Partition Editor
DISK Geometry: 8354 cyls/255 heads/63 sectors = 134207010 sectors (65530MB)

Offset          Size(ST)          End          Name PType          Desc Subtype          Flags
-----
Value Required

Enter type of partition to create:

Pressing Enter will choose the default, a native FreeBSD
slice (type 165).  Other popular values are 6 for a
DOS FAT partition, 131 for a Linux ext2fs partition, or
130 for a Linux swap partition.

Note:  If you choose a non-FreeBSD partition type, it will not
be formatted or otherwise prepared, it will simply reserve space
for you to use another tool, such as DOS format, to later format
and actually use the partition.

The fo
A = Us
D = De
T = Ch

mode
rd m.

165

[ OK ]      Cancel

Use F1 or ? to get more help, arrow keys to select.
```

Partition

Partition hard disk as only one partition

```
Disk name:      ad0                      FDISK Partition Editor
DISK Geometry:  8354 cyls/255 heads/63 sectors = 134207010 sectors (65530MB)

Offset          Size(ST)          End          Name  PType      Desc  Subtype  Flags
-----
           0             63             62          -    12      unused         0
        63    134206947    134207009    ad0s1     8    freebsd      165
    134207010         10718    134217727          -    12      unused         0
```

The following commands are supported (in upper or lower case):

A = Use Entire Disk	G = set Drive Geometry	C = Create Slice	F = 'DD' mode
D = Delete Slice	Z = Toggle Size Units	S = Set Bootable	I = Wizard m.
T = Change Type	U = Undo All Changes	Q = Finish	

Use F1 or ? to get more help, arrow keys to select.



Partition

S = Set bootable

```
Disk name:      ad0                      FDISK Partition Editor
DISK Geometry:  8354 cyls/255 heads/63 sectors = 134207010 sectors (65530MB)
```

Offset	Size(ST)	End	Name	PType	Desc	Subtype	Flags
0	63	62	-	12	unused	0	
63	134206947	134207009	ad0s1	8	freebsd	165	A
134207010	10718	134217727	-	12	unused	0	

The following commands are supported (in upper or lower case):

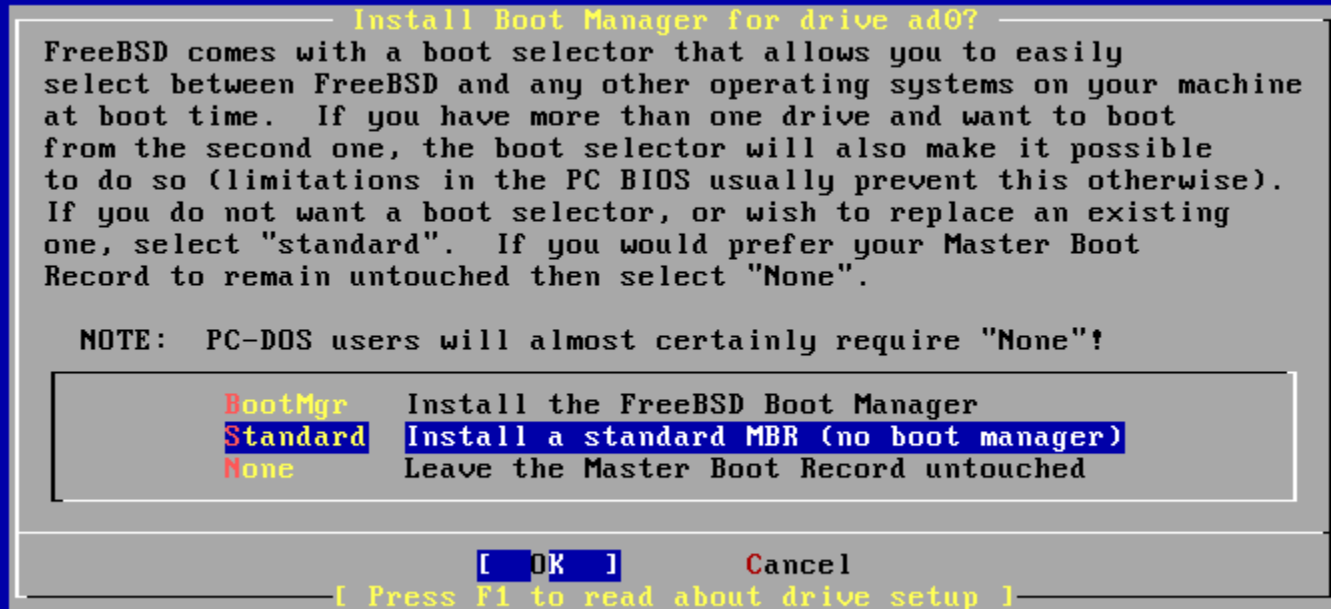
A = Use Entire Disk	G = set Drive Geometry	C = Create Slice	F = 'DD' mode
D = Delete Slice	Z = Toggle Size Units	S = Set Bootable	I = Wizard m.
T = Change Type	U = Undo All Changes	Q = Finish	

Use F1 or ? to get more help, arrow keys to select.



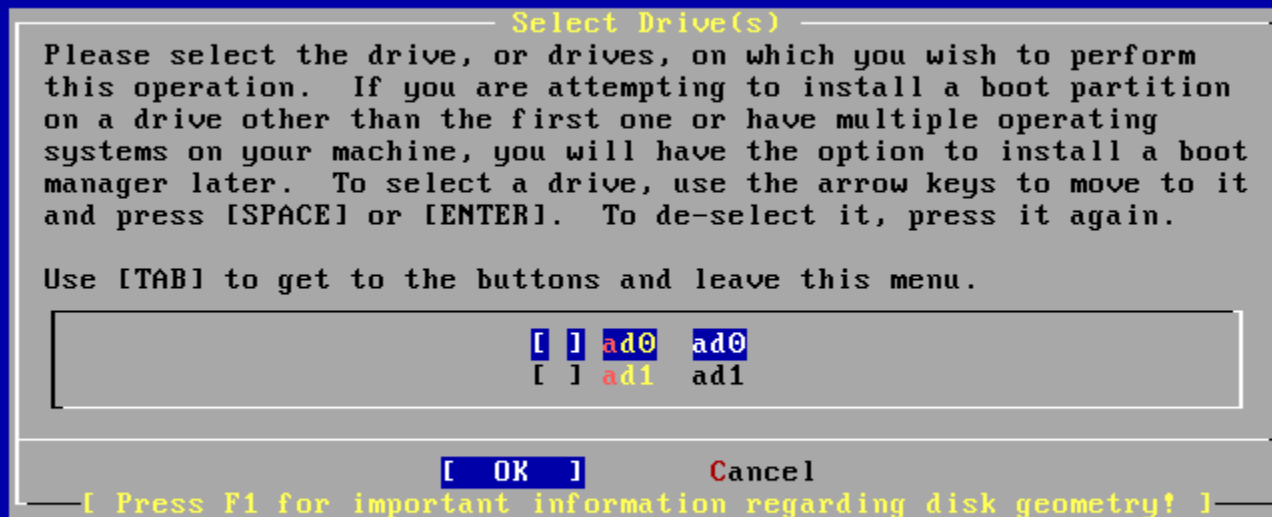
Partition - Boot Manager

- BootMgr - install a simple boot manager to disk MBR
- Standard - write to disk MBR
- None - leave it unchanged



Partition - More than 1 HDs

Be aware which disk is your right target!



Label

- C = Create
- D = Delete
- Q = Finish

```
FreeBSD Disklabel Editor

Disk: ad0      Partition name: ad0s1  Free: 134206947 blocks (65530MB)

Part      Mount      Size Newfs      Part      Mount      Size Newfs
-----

```

The following commands are valid here (upper or lower case):

C = Create	D = Delete	M = Mount pt.	
N = Newfs Opts	Q = Finish	S = Toggle SoftUpdates	Z = Custom Newfs
T = Toggle Newfs	U = Undo	A = Auto Defaults	R = Delete+Merge

Use F1 or ? to get more help, arrow keys to select.

```
█
```

Label

Allocation space for swap:
typically is 2x~2.5x of your memory size.
But this is not the absolute rule!

FreeBSD Disklabel Editor

Disk: ad0 Partition name: ad0s1 Free: 134206947 blocks (65530MB)

Part	Mount	Size	Newfs	Part	Mount	Size	Newfs
----	-----	----	-----	----	-----	----	-----

Value Required

Please specify the partition size in blocks or append a trailing G for gigabytes, M for megabytes, or C for cylinders.
134206947 blocks (65530MB) are free.

1G

[OK] Cancel

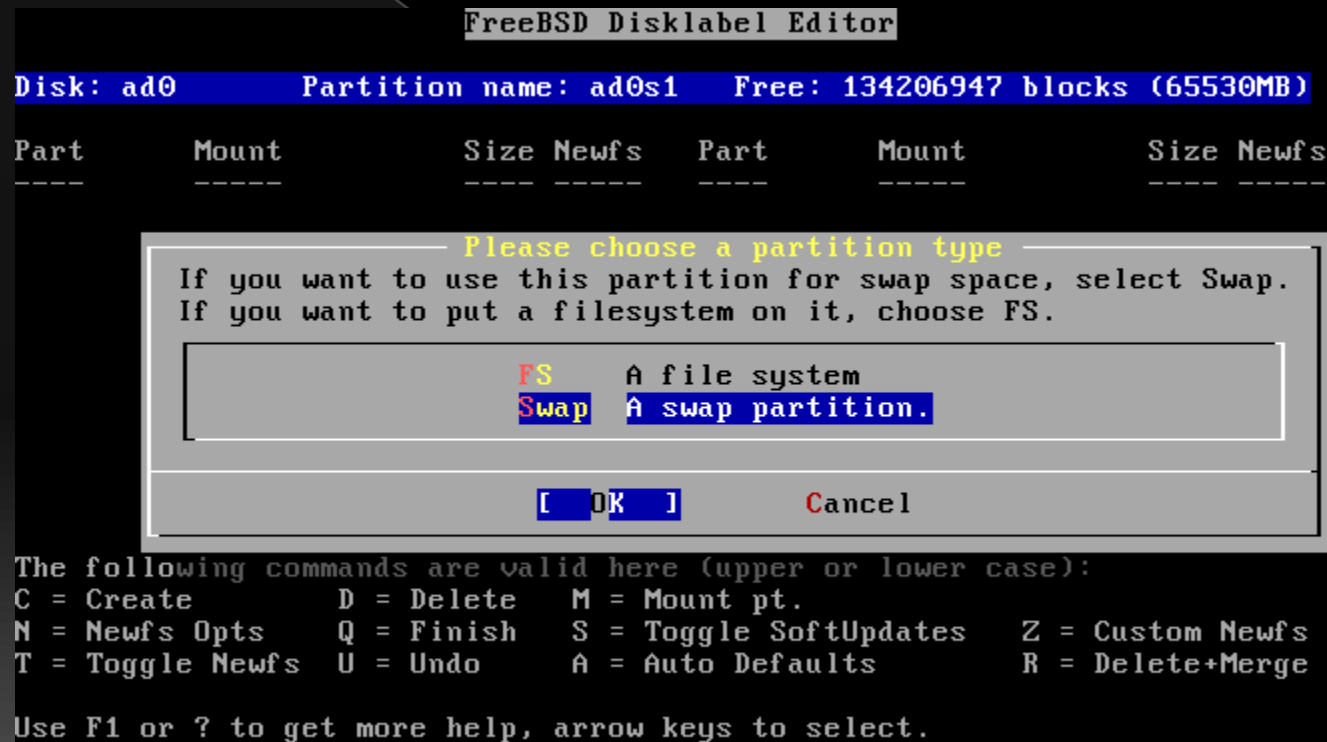
The following commands are valid here (upper or lower case):

C = Create	D = Delete	M = Mount pt.	
N = Newfs Opts	Q = Finish	S = Toggle SoftUpdates	Z = Custom Newfs
T = Toggle Newfs	U = Undo	A = Auto Defaults	R = Delete+Merge

Use F1 or ? to get more help, arrow keys to select.

Label

Setting which label is used for swap
Swap spaces can be distributed on different disks



Label

Default is all that remained...

FreeBSD Disklabel Editor

Disk: ad0 Partition name: ad0s1 Free: 132109795 blocks (64506MB)

Part	Mount	Size	Newfs	Part	Mount	Size	Newfs
ad0s1b	swap	1024MB	SWAP				

Value Required

Please specify the partition size in blocks or append a trailing G for gigabytes, M for megabytes, or C for cylinders.
132109795 blocks (64506MB) are free.

132109795

[OK] Cancel

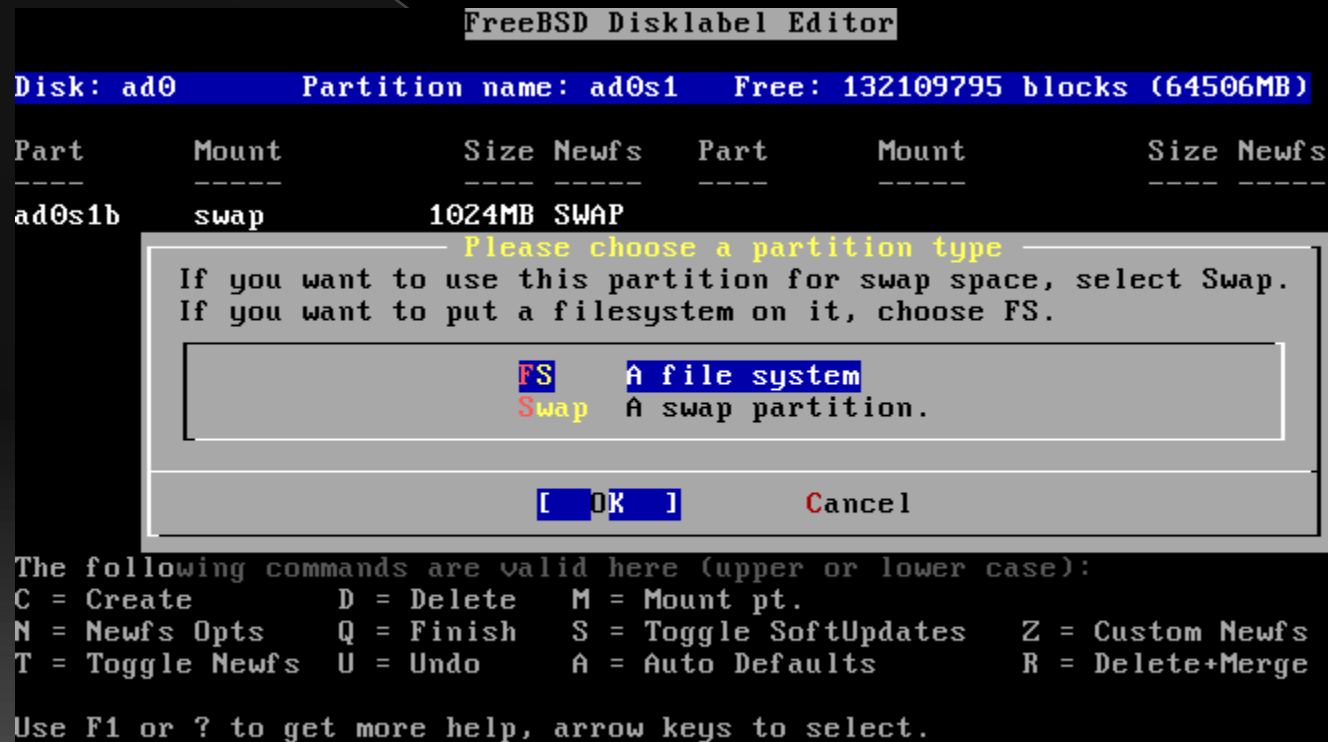
The following commands are valid here (upper or lower case):

C = Create	D = Delete	M = Mount pt.	
N = Newfs Opts	Q = Finish	S = Toggle SoftUpdates	Z = Custom Newfs
T = Toggle Newfs	U = Undo	A = Auto Defaults	R = Delete+Merge

Use F1 or ? to get more help, arrow keys to select.

Label

File system type, for data storage



Label

Setting mount point
For learning '/' is enough.
(Not so good for practical using,
unless all other things are on other machines)

FreeBSD Disklabel Editor

Disk: ad0 Partition name: ad0s1 Free: 132109795 blocks (64506MB)

Part	Mount	Size	Newfs	Part	Mount	Size	Newfs
ad0s1b	swap	1024MB	SWAP				

Value Required

Please specify a mount point for the partition

[OK] Cancel

The following commands are valid here (upper or lower case):

C = Create	D = Delete	M = Mount pt.	
N = Newfs Opts	Q = Finish	S = Toggle SoftUpdates	Z = Custom Newfs
T = Toggle Newfs	U = Undo	A = Auto Defaults	R = Delete+Merge

Use F1 or ? to get more help, arrow keys to select.

Label

Then we have two labels for meet minimal requirement

```
FreeBSD Disklabel Editor

Disk: ad0      Partition name: ad0s1    Free: 0 blocks (0MB)

Part      Mount      Size Newfs    Part      Mount      Size Newfs
----      -
ad0s1b    swap      1024MB SWAP
ad0s1a    /          64506MB UFS2  Y

The following commands are valid here (upper or lower case):
C = Create      D = Delete    M = Mount pt.
N = Newfs Opts  Q = Finish    S = Toggle SoftUpdates  Z = Custom Newfs
T = Toggle Newfs U = Undo      A = Auto Defaults      R = Delete+Merge

Use F1 or ? to get more help, arrow keys to select.
█
```

Label

S = Toggle SoftUpdates (something like journaling)

http://en.wikipedia.org/wiki/Soft_updates

<http://www.mckusick.com/softdep/>

FreeBSD Disklabel Editor

Disk: ad0 Partition name: ad0s1 Free: 0 blocks (0MB)

Part	Mount	Size	Newfs	Part	Mount	Size	Newfs
----	-----	-----	-----	----	-----	-----	-----
ad0s1b	swap	1024MB	SWAP				
ad0s1a	/	64506MB	UFS2+S Y				

The following commands are valid here (upper or lower case):

C = Create	D = Delete	M = Mount pt.	
N = Newfs Opts	Q = Finish	S = Toggle SoftUpdates	Z = Custom Newfs
T = Toggle Newfs	U = Undo	A = Auto Defaults	R = Delete+Merge

Use F1 or ? to get more help, arrow keys to select.



Distributions

Choose Distributions

As a convenience, we provide several "canned" distribution sets. These select what we consider to be the most reasonable defaults for the type of system in question. If you would prefer to pick and choose the list of distributions yourself, simply select "Custom". You can also pick a canned distribution set and then fine-tune it with the Custom item.

Choose an item by pressing [SPACE] or [ENTER]. When finished, choose the Exit item or move to the OK button with [TAB].

- [] 4 Developer Full sources, binaries and doc but no games
[] 5 X-Developer Same as above + X Window System
[] 6 Kern-Developer Full binaries and doc, kernel sources only
[] 7 X-Kern-Developer Same as above + X Window System
[] 8 User Average user - binaries and doc only
[] 9 X-User Same as above + X Window System
[] A Minimal The smallest configuration possible
> > B Custom Specify your own distribution set

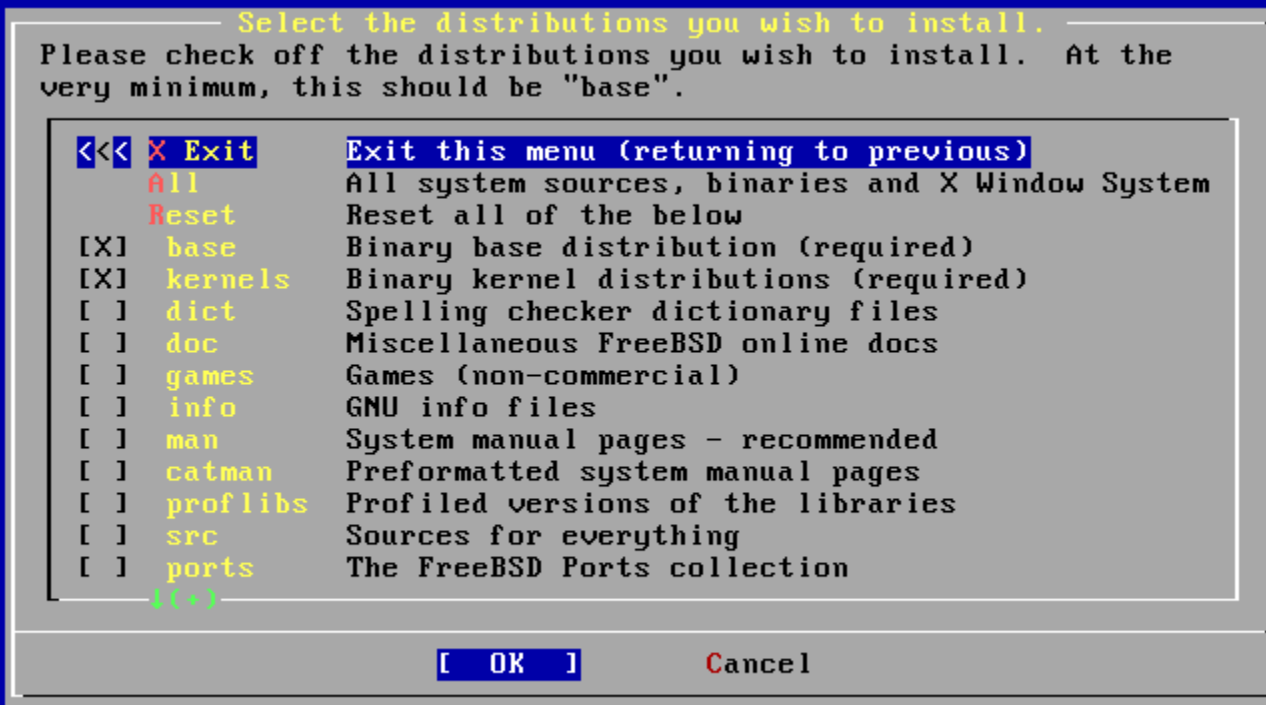
[OK]

Cancel

[Press F1 for more information on these options.]

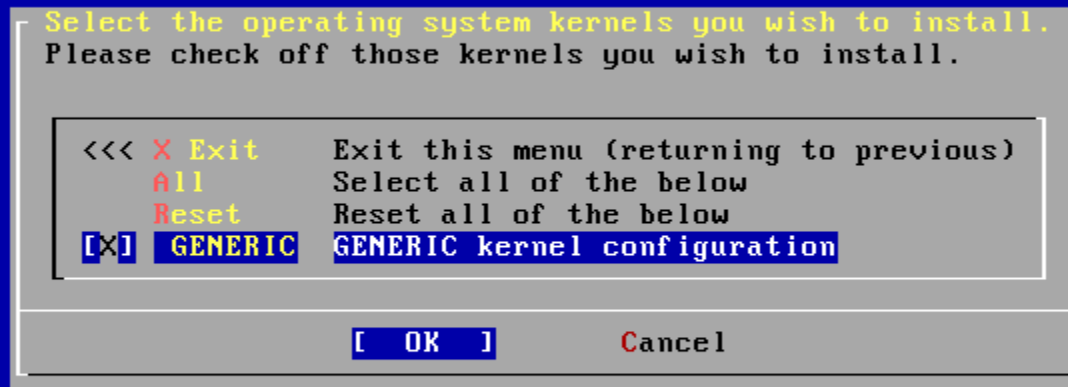
Distributions

Minimum: **base** and **kernel**
Also be good: **src** and **ports**



Distributions - kernel

- SMP



Media - CD/DVD

Choose Installation Media

FreeBSD can be installed from a variety of different installation media, ranging from floppies to an Internet FTP server. If you're installing FreeBSD from a supported CD/DVD drive then this is generally the best media to use if you have no overriding reason for using other media.

- | | |
|-----------------|-------------------------------------------------|
| 1 CD/DVD | Install from a FreeBSD CD/DVD |
| 2 FTP | Install from an FTP server |
| 3 FTP Passive | Install from an FTP server through a firewall |
| 4 HTTP | Install from an FTP server through a http proxy |
| 5 DOS | Install from a DOS partition |
| 6 NFS | Install over NFS |
| 7 File System | Install from an existing filesystem |
| 8 Floppy | Install from a floppy disk set |
| 9 Tape | Install from SCSI or QIC tape |
| X Options | Go to the Options screen |

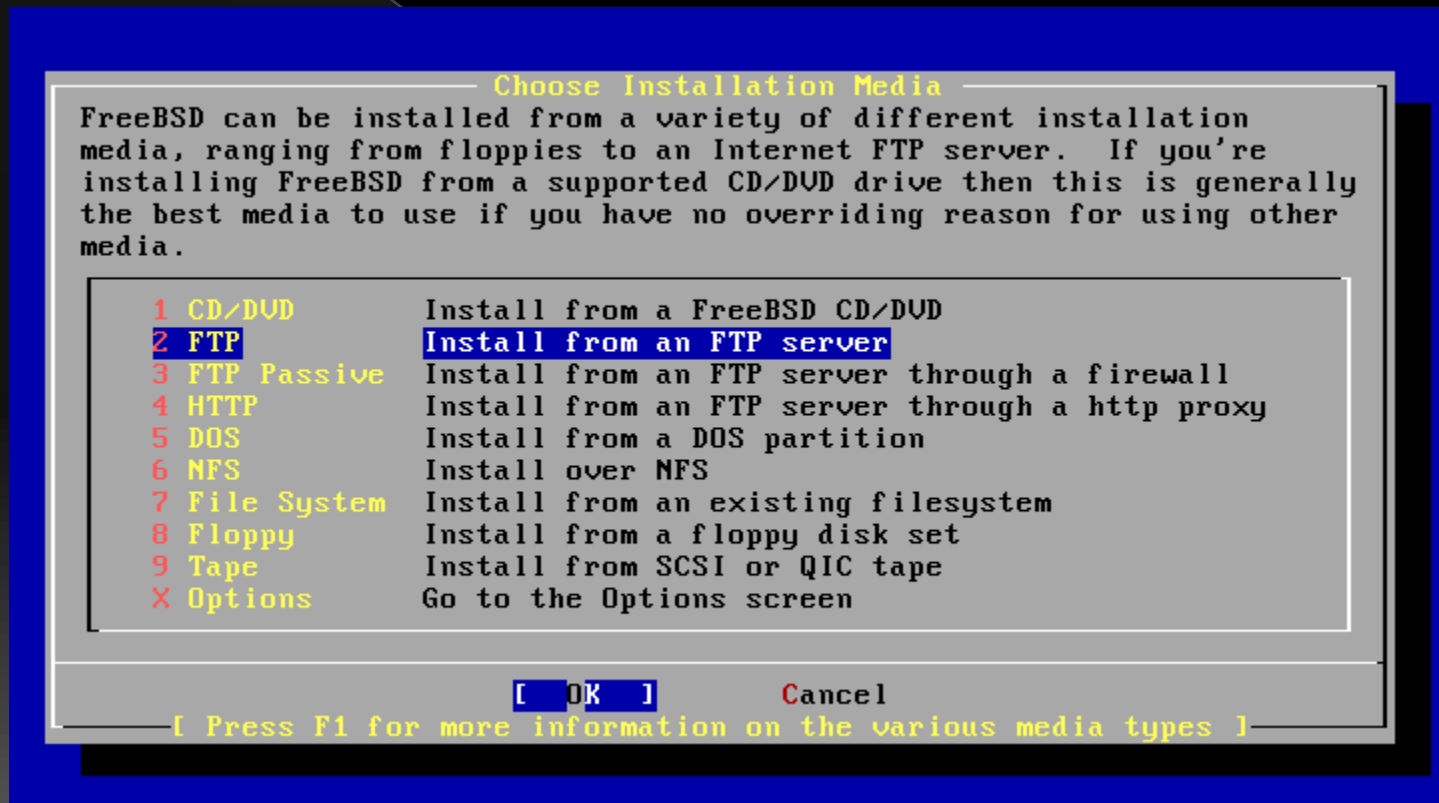
[**OK**]

Cancel

[Press F1 for more information on the various media types]

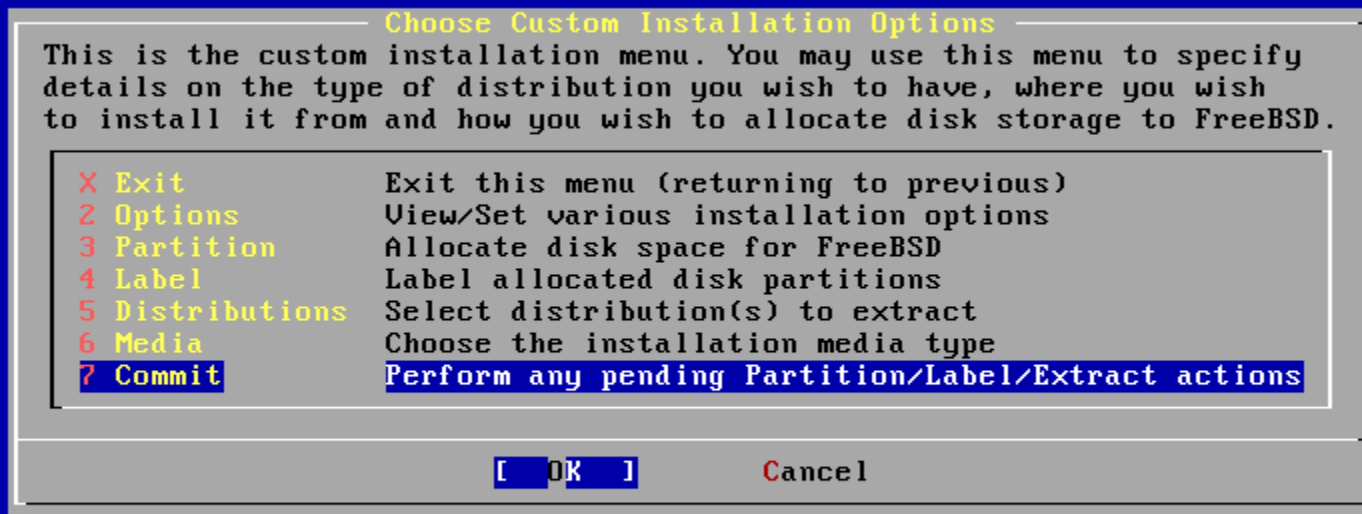
Media - FTP

- Passive Mode:
Server opens the port and let client to connect to.
(recommended)



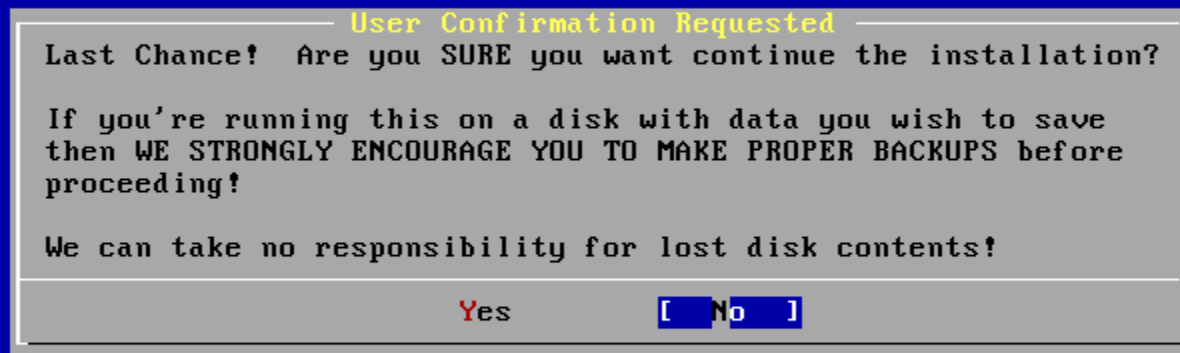
Commit

Just do it!

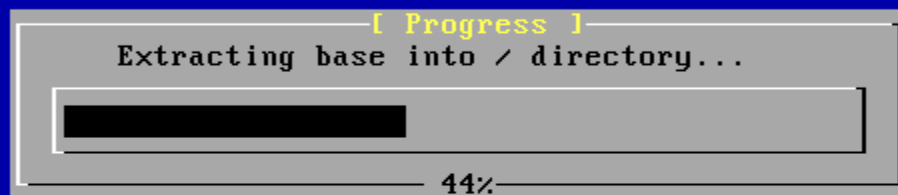


Last Chance!

We can take no responsibility for lost disk contents!
Don't forget backup!



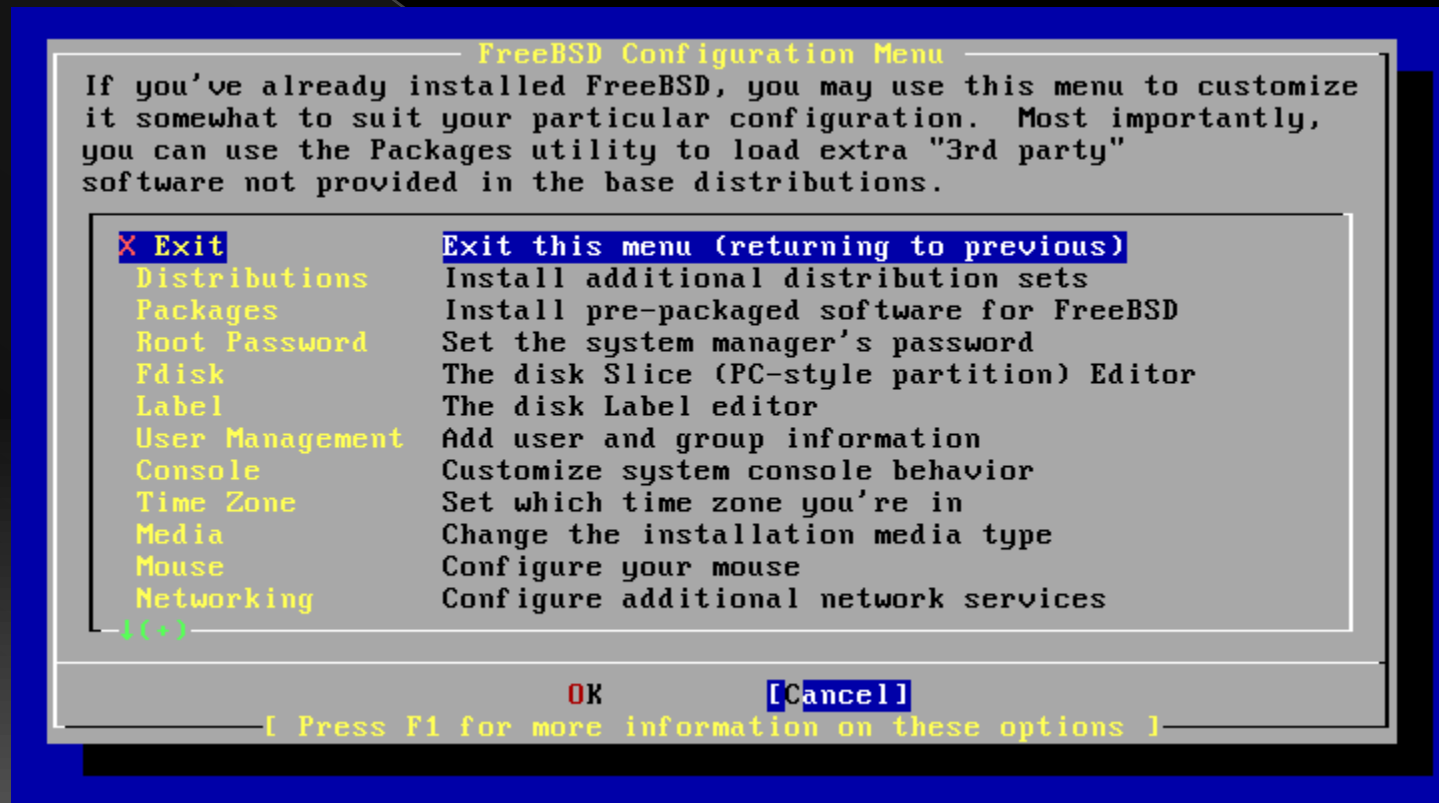
Installing...



19956736 bytes read from base dist, chunk 15 of 34 @ 1247.3 KBytes/sec.

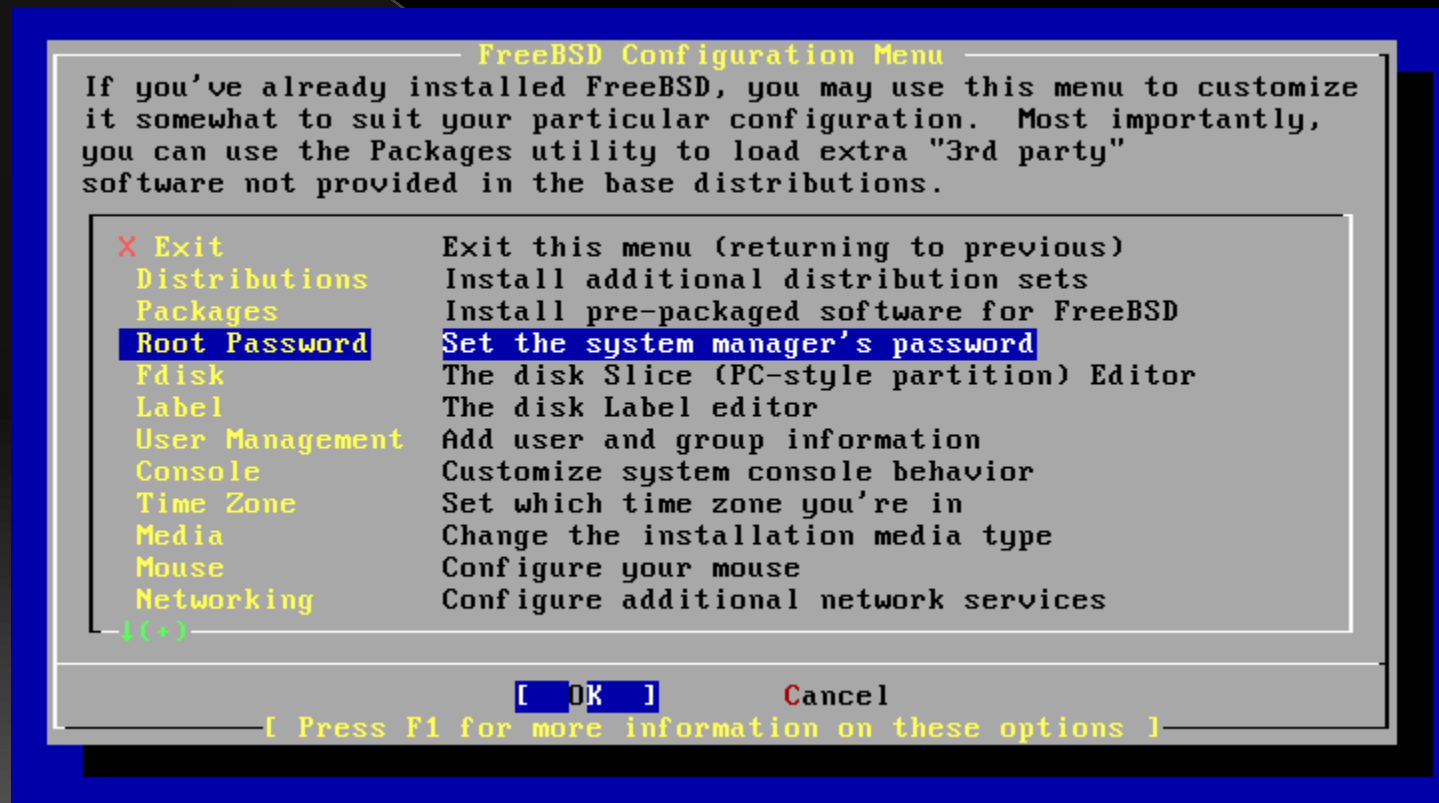
Configuration

- Root Password
- User Management
- Time Zone
- Networking



Root Password

Or your computer will be cracked barely by hitting one [Enter]



User Management

Create a user different than root for remote login



User Management

For administration user, “staff” is a good group.
If you want to become root, be sure you are in “wheel” group.



The image shows a 'User and Group Management' dialog box with a title bar. Inside, there's a section titled 'Add a new user'. It contains several input fields: 'Login ID' with 'lwhsu', 'UID' with '1001', 'Group' with 'staff', 'Password' with '****', 'Full name' with 'Li-Wen Hsu', 'Member groups' with 'wheel', 'Home directory' with '/home/lwhsu', and 'Login shell' with '/bin/tcsh'. At the bottom are 'OK' and 'CANCEL' buttons.

Login ID:	UID:	Group:	Password:
lwhsu	1001	staff	****

Full name:	Member groups:
Li-Wen Hsu	wheel

Home directory:	Login shell:
/home/lwhsu	/bin/tcsh

OK CANCEL

[The user's login shell (leave blank for default)]

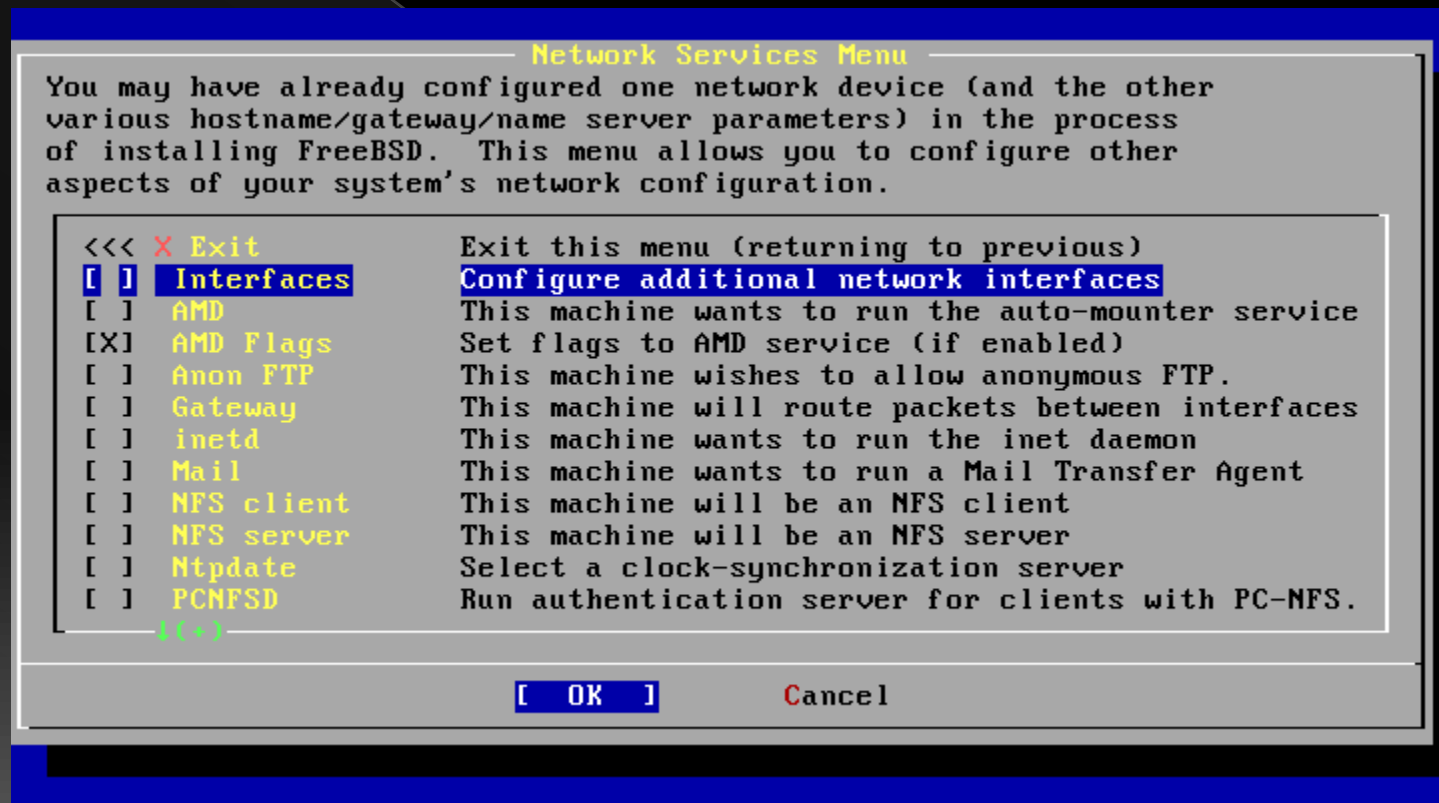
Time Zone

- Asia -> Taiwan
- Is BIOS time UTC? No.
- CST? Yes.



Network Services

- Interface
- sshd



Network Services - Interface

- DHCP?
- IPv6?

Network Configuration

Host: Domain:

IPv4 Gateway: Name server:

Configuration for Interface re0

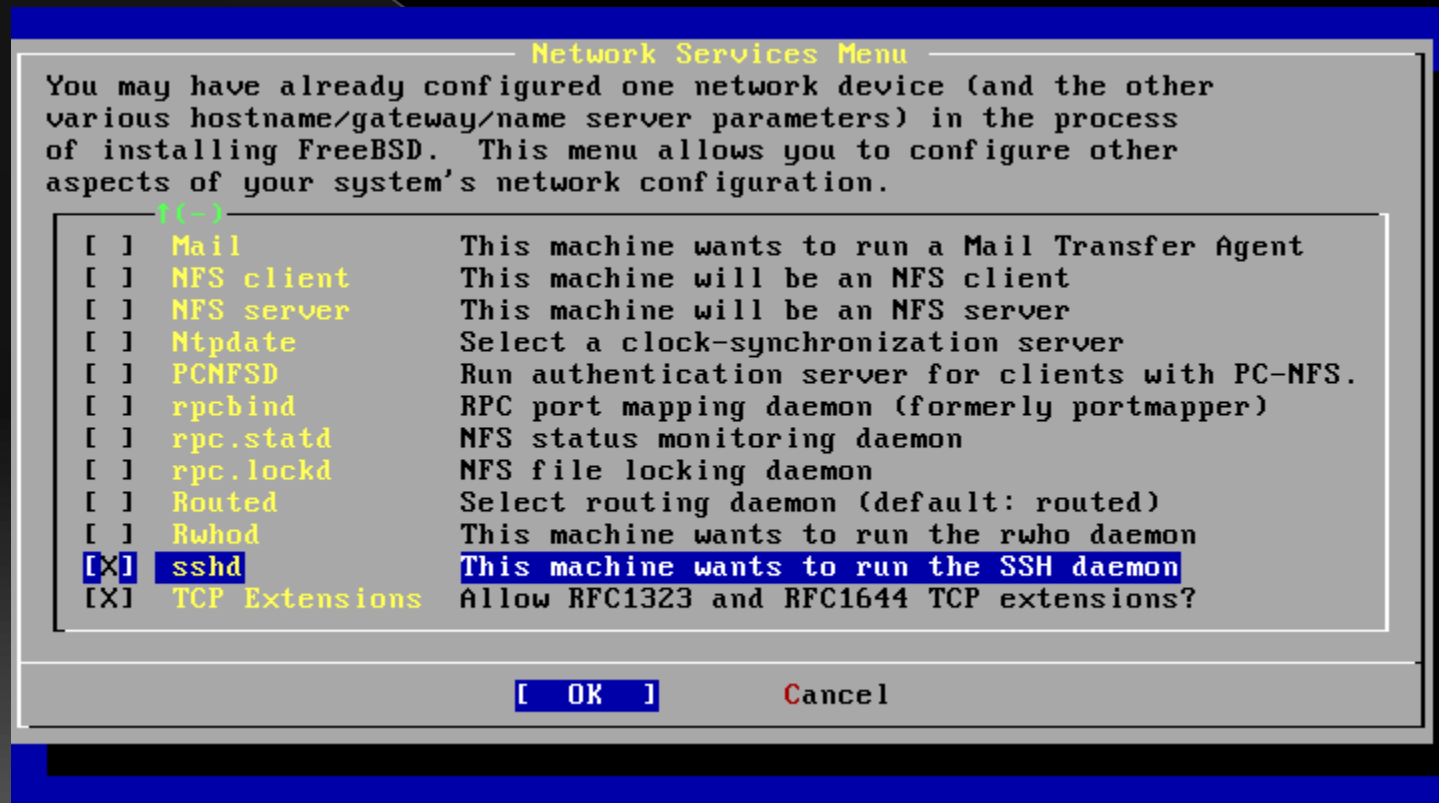
IPv4 Address: Netmask:

Extra options to ifconfig (usually empty):

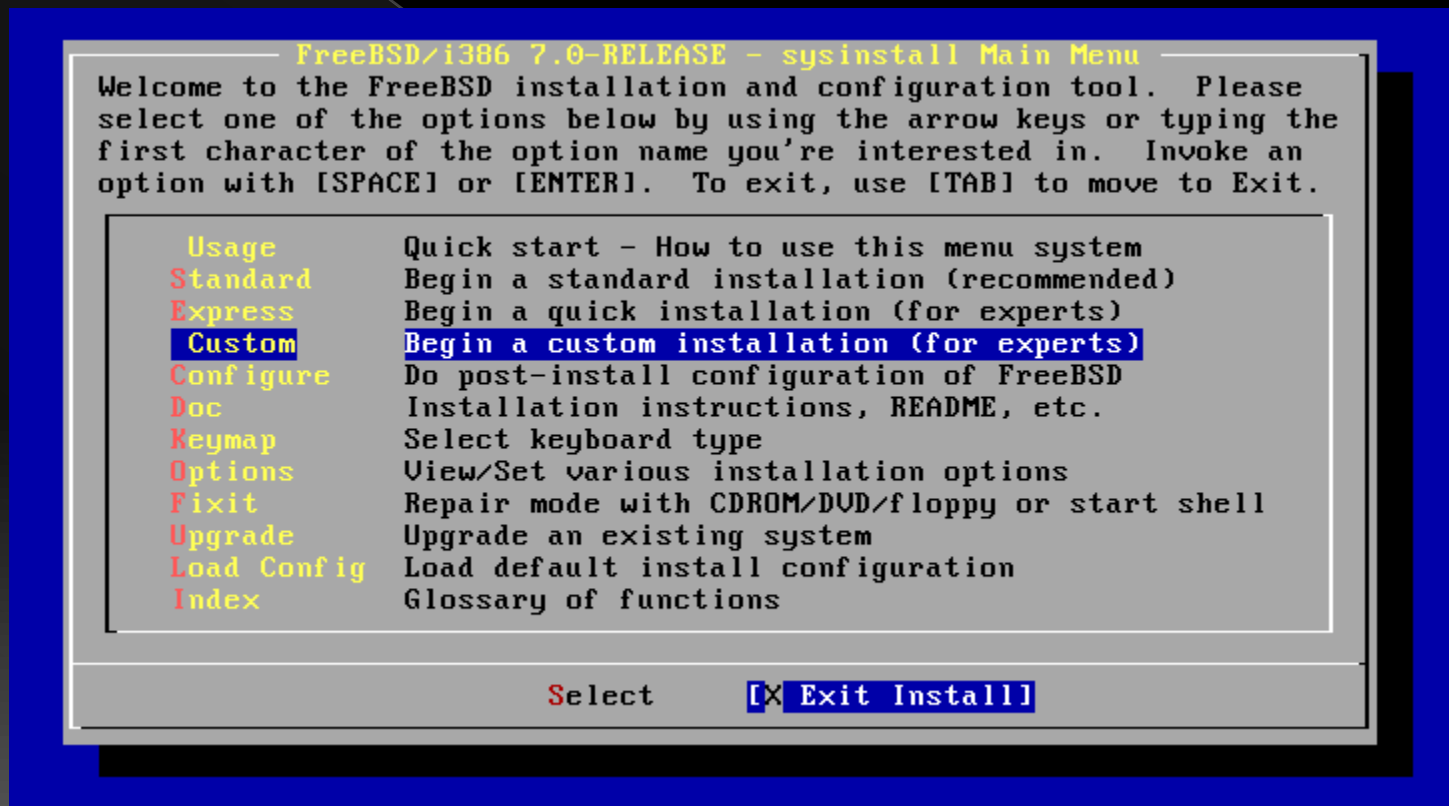
[Select this if you are happy with these settings]

Network Services - sshd

Open a way for remote login

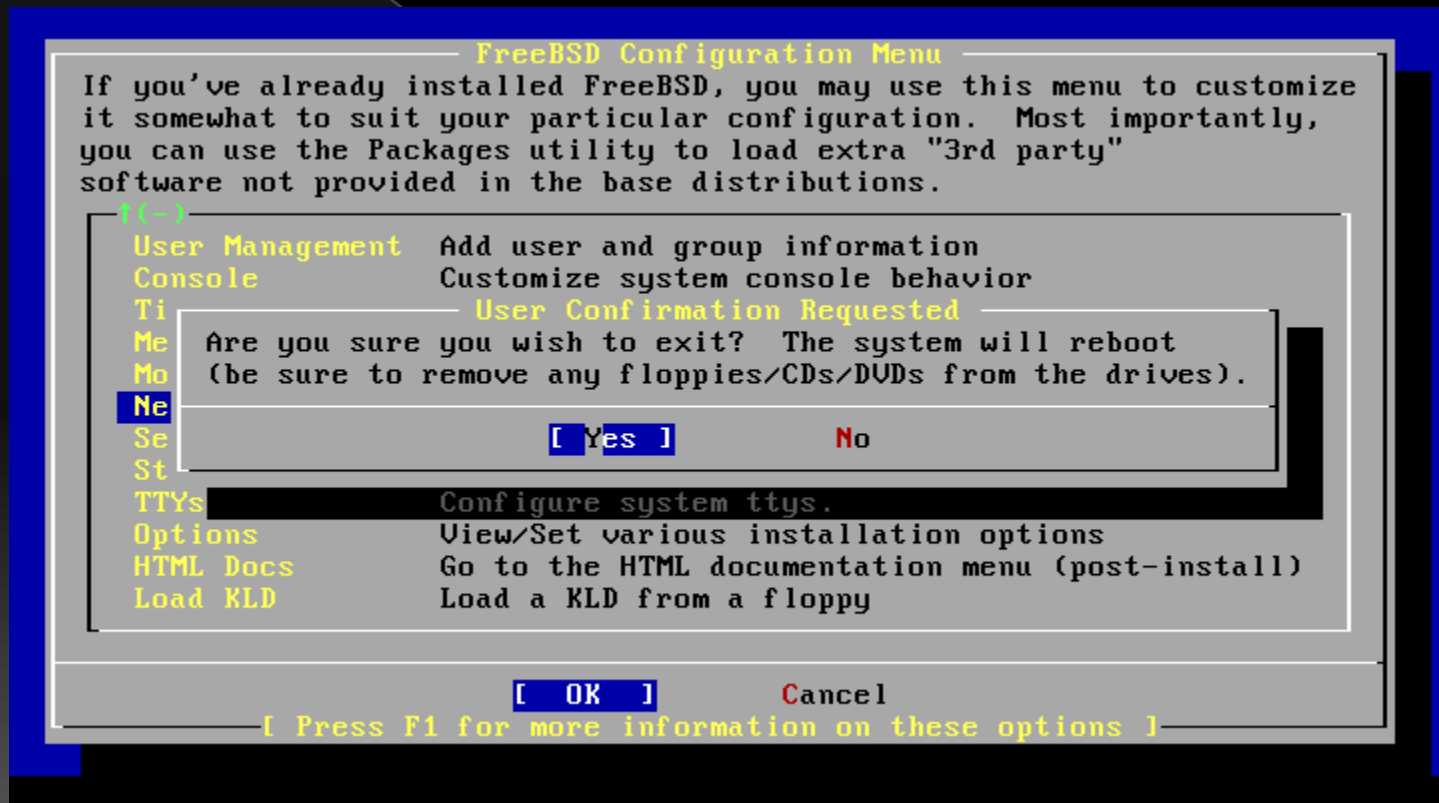


Done!



Last Step...

Be sure to remove booting media.
You would not want restart whole process again...

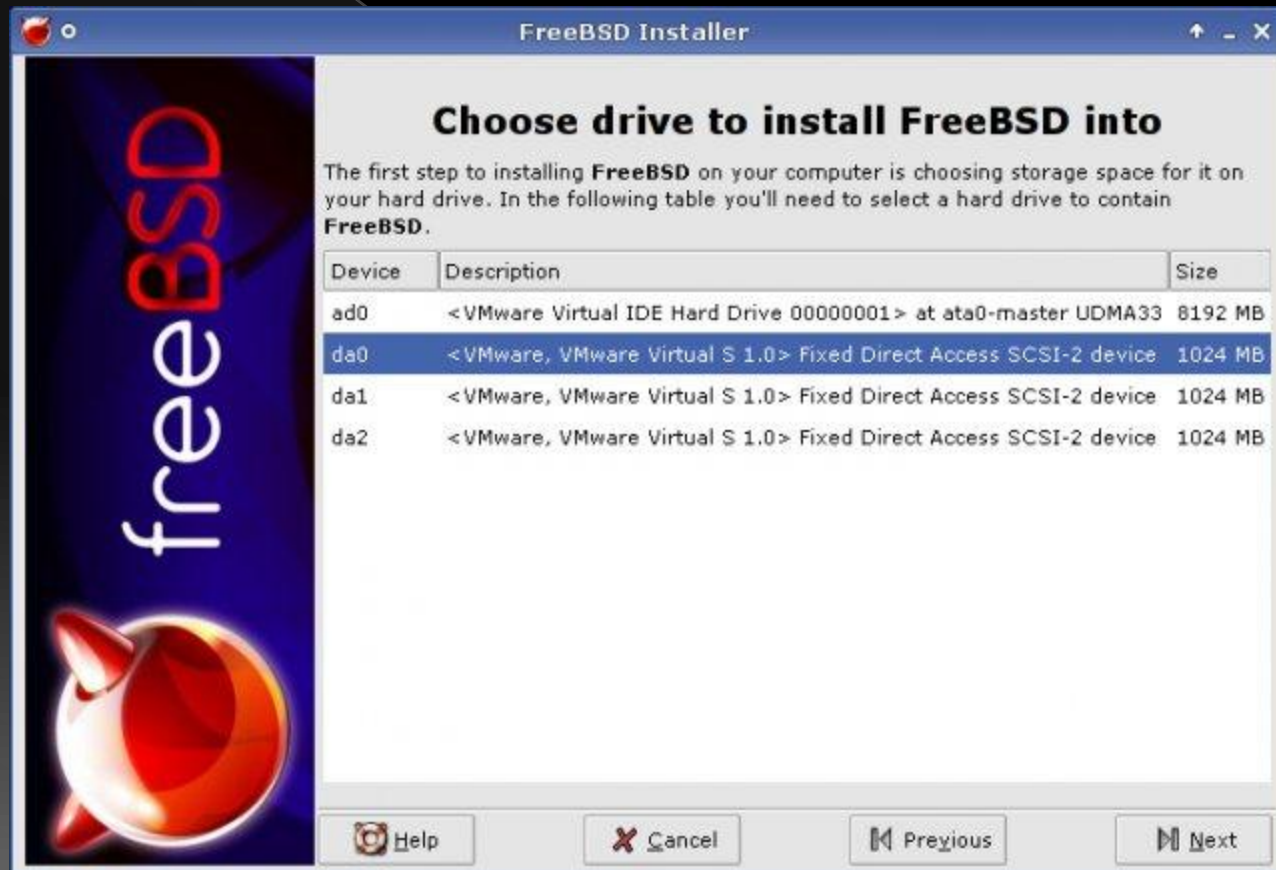


Finally, reboot and enjoy!

Other Installers

- Fininstall

- > <http://sourceforge.net/projects/finstall/>



Exercise 1 – Keeping update

- build world and kernel

CVS Tags

◎ Branch Tags

- › HEAD (.) (-CURRENT)
- › RELENG_7 (-STABLE)
- › RELENG_7_0 (-RELEASE)
 - RELENG_7_0_BP

◎ Release Tags

- › RELENG_7_0_0_RELEASE

http://www.freebsd.org/doc/en_US.ISO8859-1/books/handbook/cvs-tags.html

CVSup Configuration File

- ◉ /usr/share/examples/cvsup/
 - > standard-supfile

- *default host=cvsup.tw.FreeBSD.org

- *default base=/var/db

- *default prefix=/usr

- *default release=cvs tag=RELENG_7_0

- *default delete use-rel-suffix

- ◉ csup <supfile>

- csup(1)

Make configuration file

/etc/make.conf:

SUP_UPDATE= yes

SUP= /usr/bin/csup

SUPFLAGS= -L 2

SUPFILE= /usr/local/etc/src-supfile

PORTSSUPFILE=/usr/local/etc/ports-supfile

KERNCONF= SABSD

CPUTYPE= core2

[/usr/share/examples/etc/make.conf](#)

[/usr/share/mk/bsd.cpu.mk](#)

Make configuration file (advanced)

NO_CLEANDIR=yes

NO_CLEAN=yes

NO_KERNELCLEAN= yes

#NO_MODULES= yes

#MODULES_WITH_WORLD= true

NO_PORTSUPDATE= yes

Use these options carefully!

/usr/src/Makefile.inc1

Steps

- ◎ `cd /usr/src`
- ◎ `make update`
- ◎ `mergemaster -p` (Pre-buildworld mode)
- ◎ `make buildworld`
- ◎ `make kernel` (`buildkernel`, `installkernel`)
(reboot and boot in single user mode)
- ◎ `make installworld`
- ◎ `mergemaster` (or `mergemaster -Ui`)
- ◎ (`make check-old`, `make delete-old`)
- ◎ `reboot`

`/usr/src/Makefile, mergemaster(8)`

Kernel configuration file

- ◉ Kernel configure file
 - > `cd /usr/src/sys/{i386,amd64}/conf/`
- ◉ “LINT”
 - > `make LINT`
- ◉ Make your own kernel configuration file
 - > `cp GENERIC “YOUR-KERNEL-NAME”`
- ◉ Edit your configuration file
- ◉ Edit `/etc/make.conf`

Parallel

◎ make -jN

- > N: how many parallel process
- > Not useable in ports

make(1)

Reboot & Check

- ◉ Reboot and enjoy it
 - > # reboot
- ◉ Check
 - > # uname -a

Handbook!

- ◉ Chapter 8 Configuring the FreeBSD Kernel
 - > <http://www.freebsd.org/doc/en/books/handbook/kernelconfig.html>
- ◉ 23.4 Rebuilding “world”
 - > <http://www.freebsd.org/doc/en/books/handbook/makeworld.html>

If Something Goes Wrong

- ◎ Boot from old kernel
 - > “6. Escape to loader prompt”
 - > Boot /boot/kernel.old/kernel
 - > cd /boot
 - > cp -R kernel.old kernel.ok
 - > rm -fr kernel
 - > mv kernel.old krenel

Handbook!

- ◎ 8.7 If Something Goes Wrong

- > <http://www.freebsd.org/doc/en/books/handbook/kernelconfig-trouble.html>

Exercise 2 – Make FreeBSD more useable

- Install 3rd party software

Install software

- ◎ Use the Source!

- > Tar ball
- > `tar xzvf certain-source.tar.gz`
- > `./configure`
- > `make; make install`

Install software

◎ Package

- > Pre-built ports
- > pkg_add, pkg_delete, pkg_deinstall, pkg_info, pkg_version

◎ Ports

- > cd /usr/ports, make search, make install clean
- > ports/ports-mgmt/portupgrade
 - portinstall, portupgrade, portversion
 - **/usr/local/etc/pkgtools.conf**
- > Ports/ports-mgmt/portmaster

CVSup Configuration File

- ◎ /usr/share/examples/cvsup/
 - > ports-supfile

*default host=cvsup.tw.FreeBSD.org

*default base=/var/db

*default prefix=/usr

*default release=cvs tag=.

*default delete use-rel-suffix

Try to use ports

- ◉ Try to install some software, such as:
 - > vim
 - > mutt
 - > wget
 - > w3m
 - > Perl, Python Ruby