

How to Shrink a Partition on Your Hard Drive

Pmli

TAs: 建議可VM(VMware, VirtualBox), 必要的話才雙系統

How to Shrink a Partition on Your Hard Drive

- ❑ Windows 7/Vista user
 - Windows 內建工具
- ❑ Windows XP user
 - EaseUS Partition Master

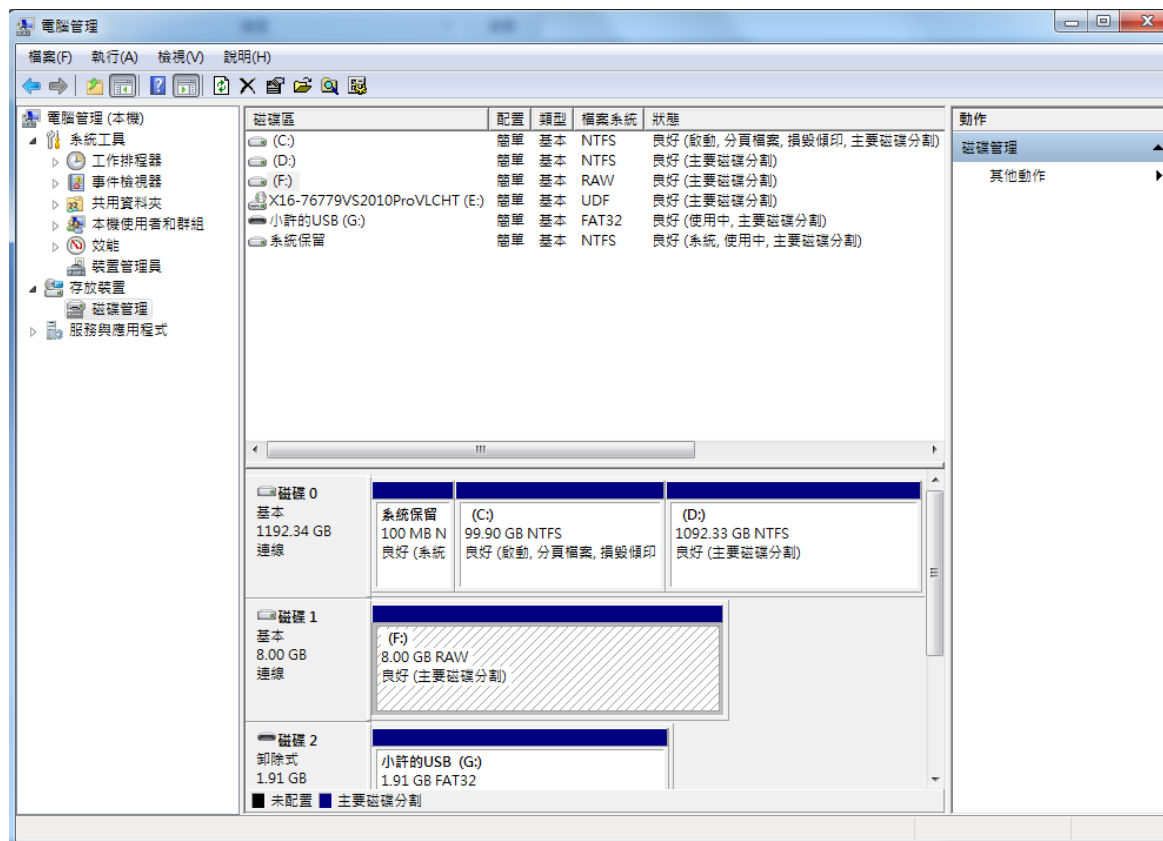
ATTENTION: backup your data first.

注意：先備份您的重要資料!!!

Windows 7/Vista user(1/4)

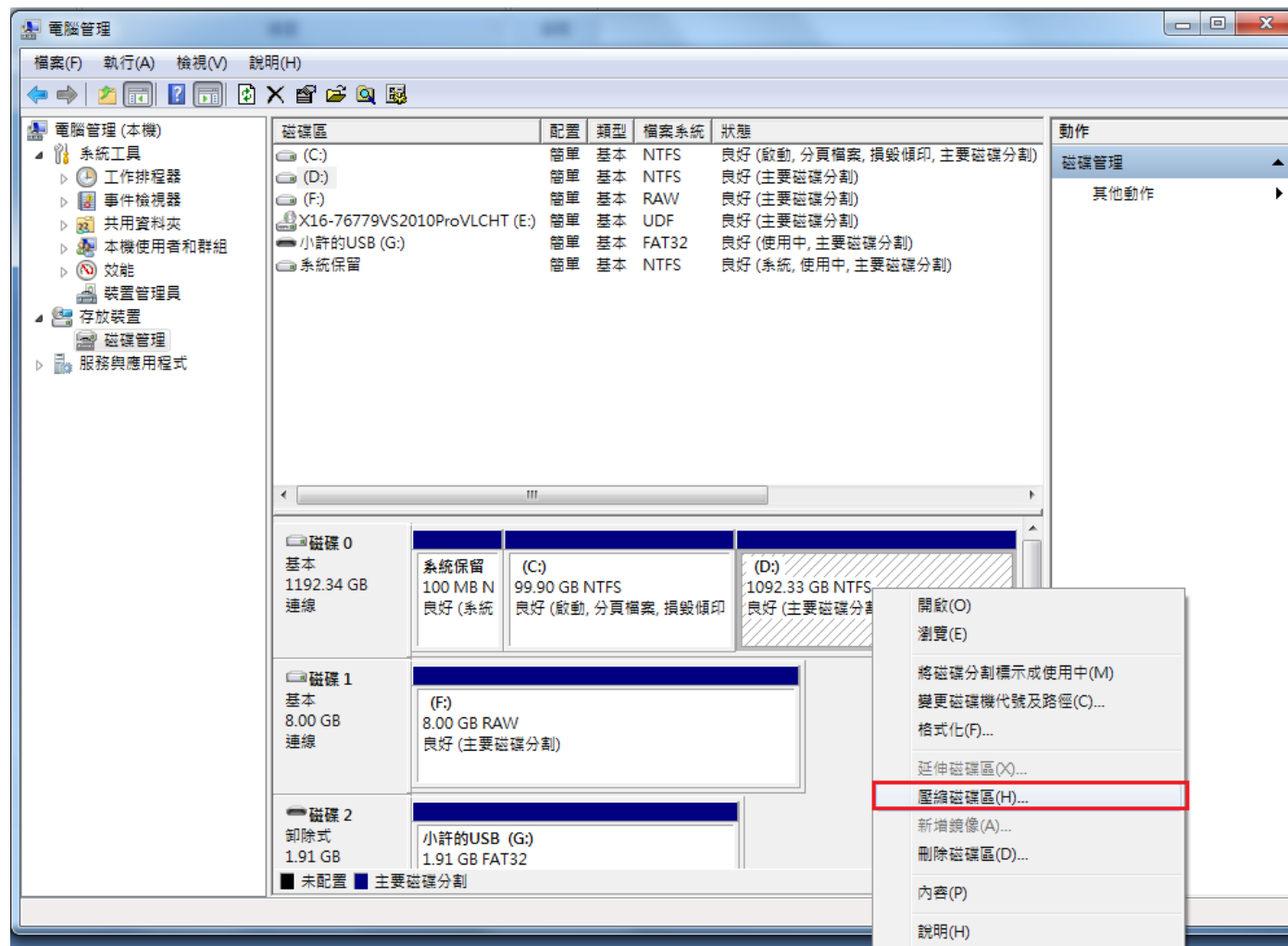
□ 在我的電腦按右鍵

- 選擇“管理”
 - 選擇“磁碟管理”。



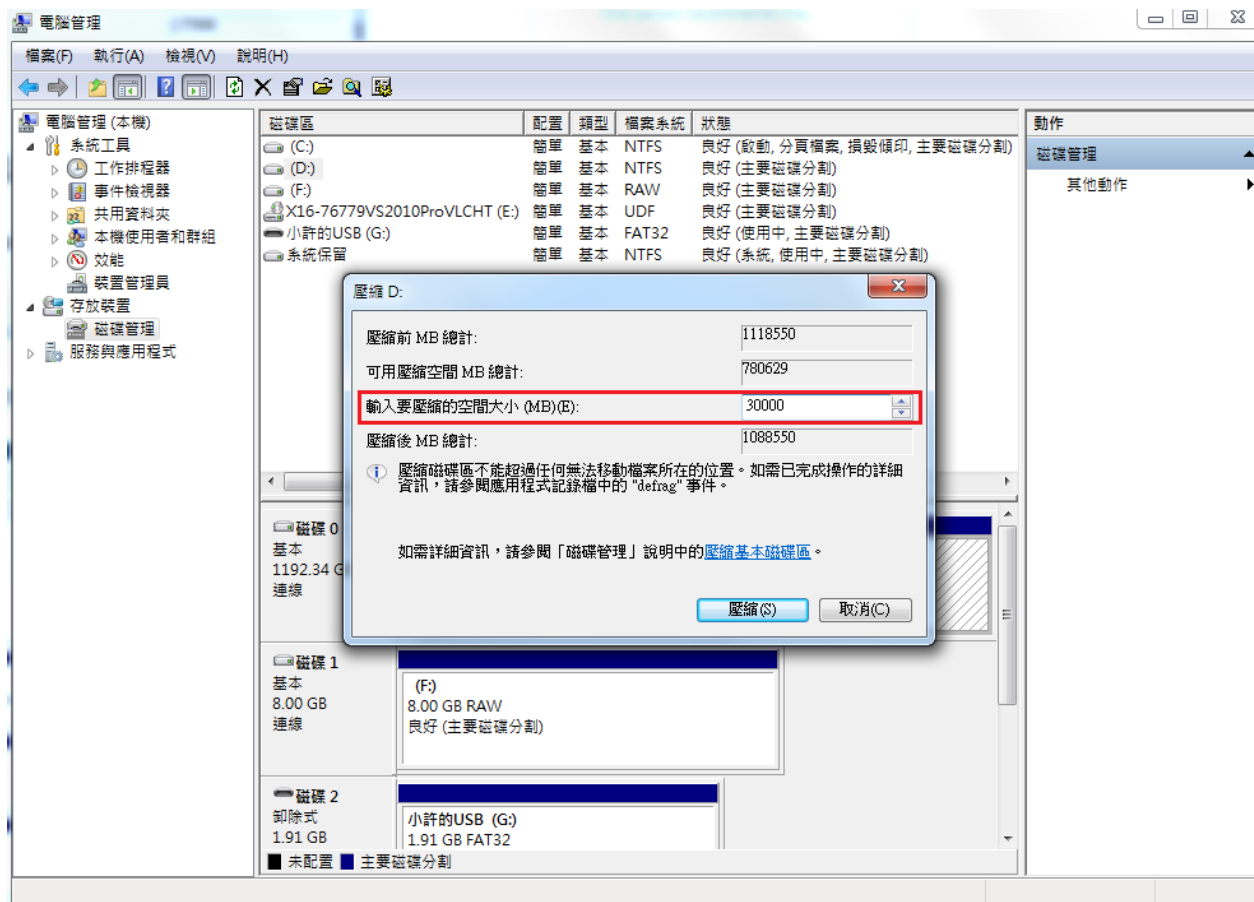
Windows 7/Vista user(2/4)

- ❑ 在你選擇的磁碟區，按右鍵，選擇“**壓縮磁碟區**”。



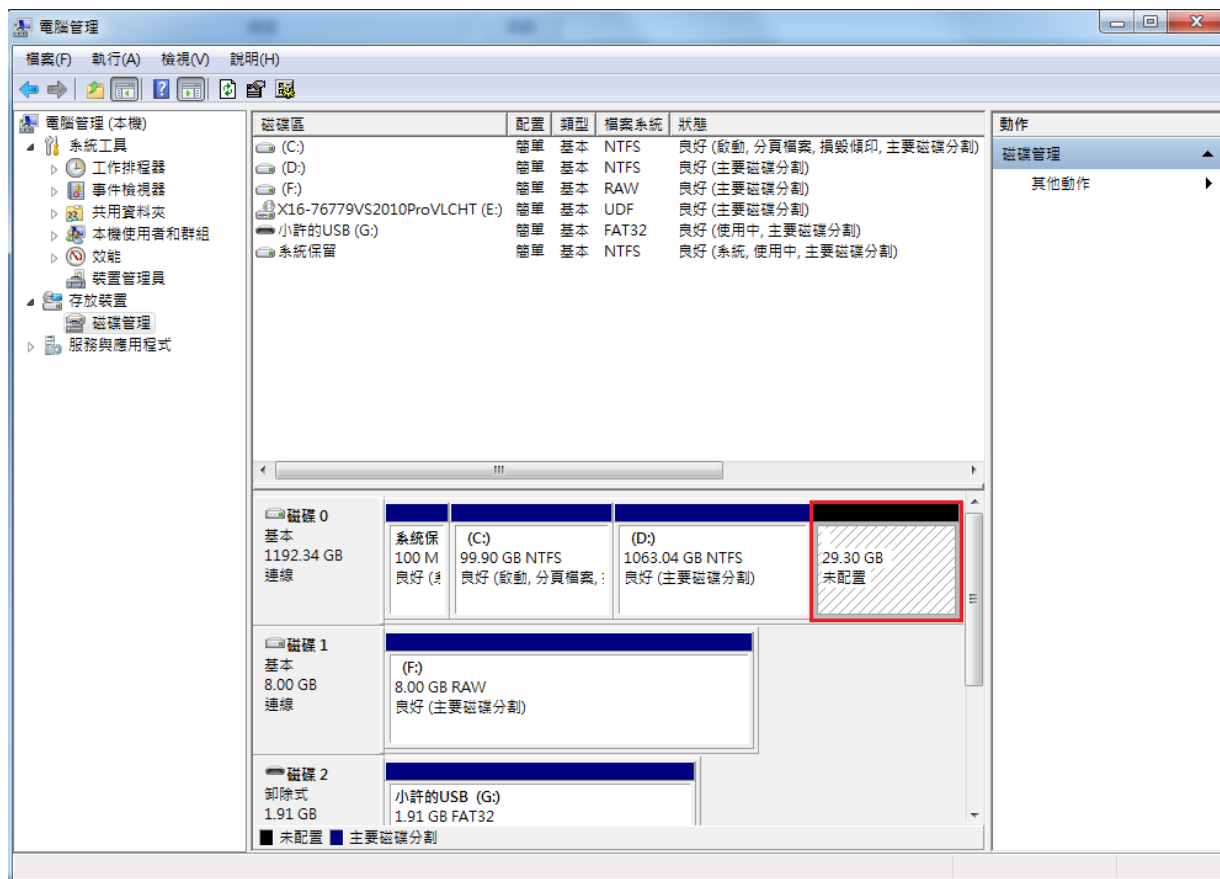
Windows 7/Vista user(3/4)

- 設定想要切割的磁區大小，設定好後按下“**壓縮**”。



Windows 7/Vista user(4/4)

- ❑ 回到磁碟管理的視窗，會在D磁區的後方，看見已經切割出來的磁區空間。



XP user(1/5)

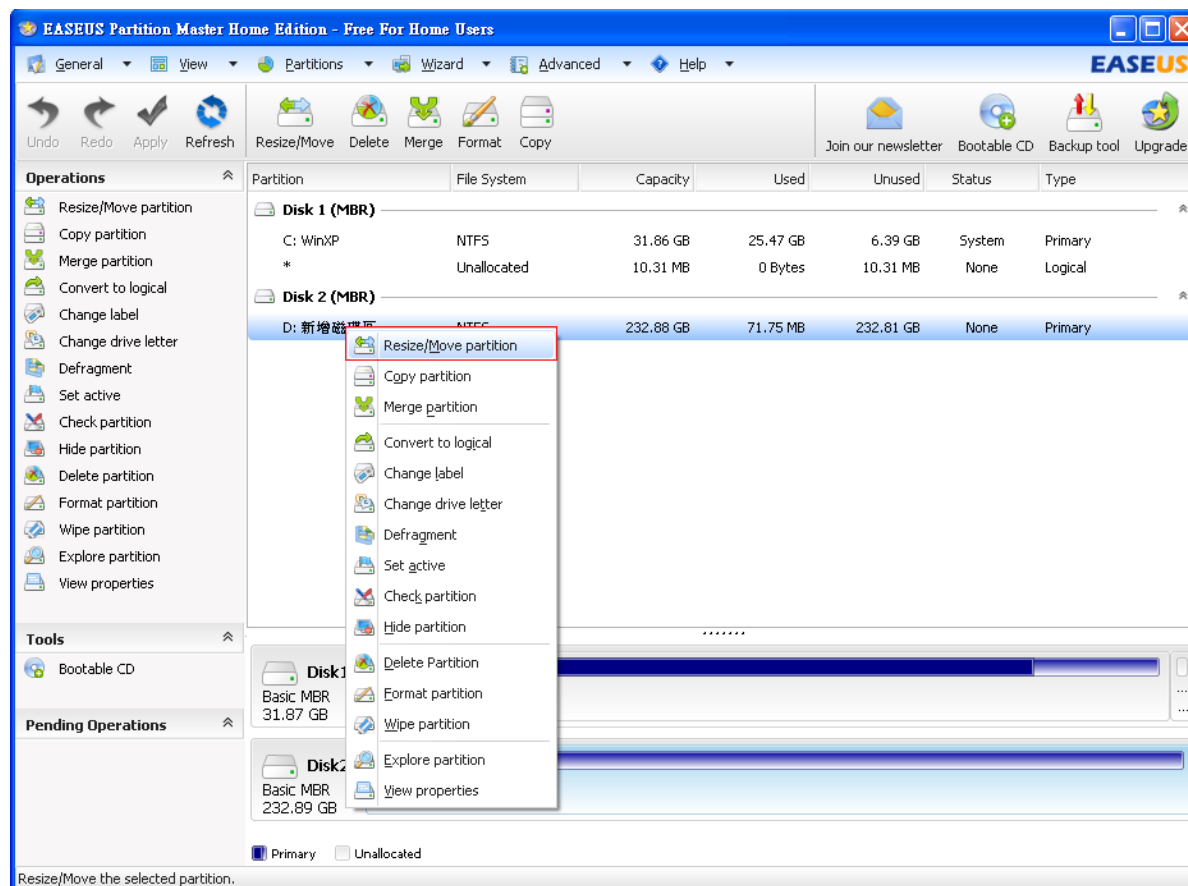
❑ Install EaseUS Partition Master.

- <http://www.partition-tool.com/landing/home-download.htm>

XP user(2/5)

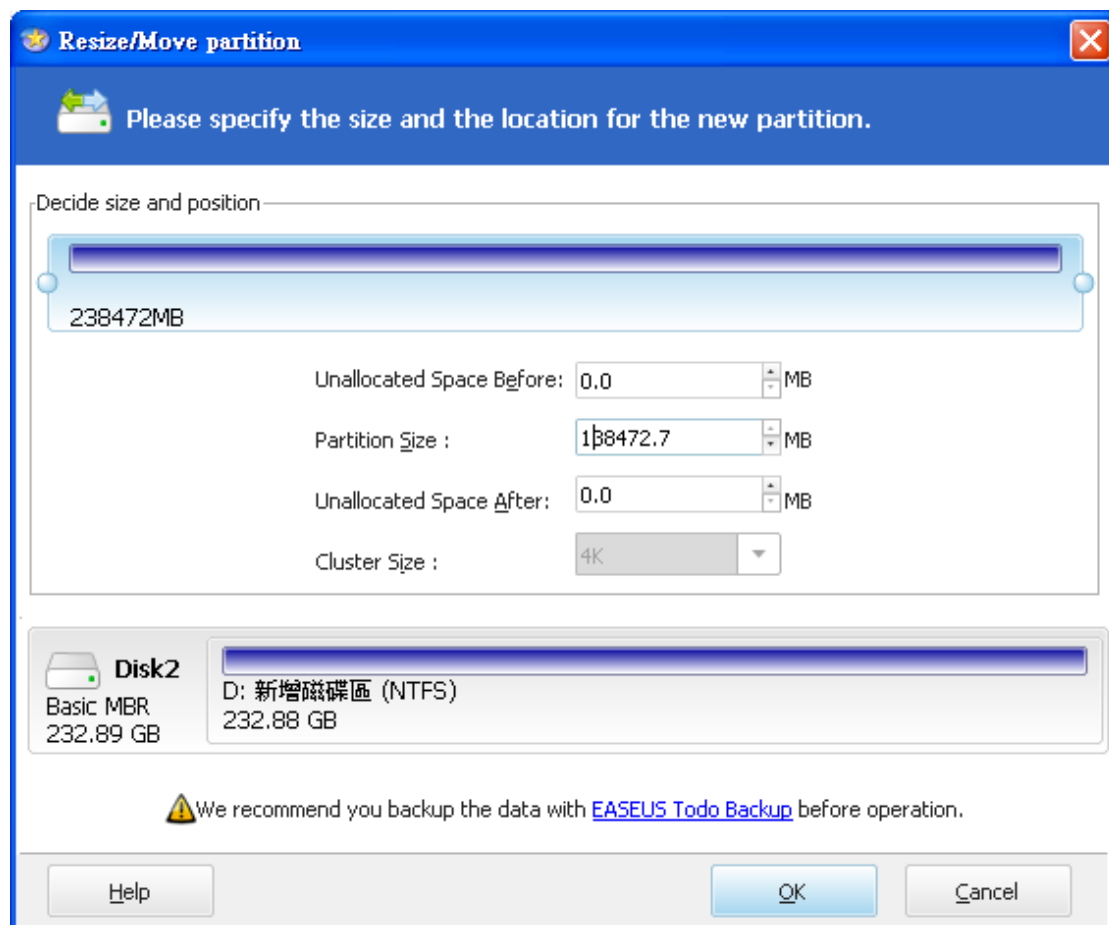
❑ Select D: drive

- Right click
- Select “**Resize/Move partition**”.



XP user(3/5)

- ❑ Click “OK”.



XP user(4/5)

❑ Click “Apply”.

The screenshot shows the EASEUS Partition Master Home Edition interface. The 'Apply' button in the top toolbar is highlighted with a red box. A dialog box titled 'Apply Changes' is open, displaying a question mark icon and the text: '1 operation is currently pending. Apply the change now?'. Below the text is a checkbox labeled 'Shut down the computer after changes are applied.' and two buttons: 'Yes' and 'No'.

Partition	File System	Capacity	Used	Unused	Status	Type
Disk 1 (MBR)						
C: WinXP	NTFS	31.86 GB	25.52 GB	6.34 GB	System	Primary
*	Unallocated	10.31 MB	0 Bytes	10.31 MB	None	Logical
Disk 2 (MBR)						
F: 新增磁碟區	NTFS	135.23 GB	71.74 MB	135.16 GB	None	Primary
*	Unallocated	97.66 GB	0 Bytes	97.66 GB	None	Logical

Disk1
Basic MBR 31.87 GB
C: WinXP (NTFS) 31.86 GB

Disk2
Basic MBR 232.89 GB
F: 新增磁碟區 (NTFS) 135.23 GB
Unallocated 97.66 GB

Primary Unallocated

We recommend closing all other applications while running EASEUS Partition Master.

XP user(5/5)

EASEUS Partition Master Home Edition - Free For Home Users

General View Partitions Wizard Advanced Help

Undo Redo Apply Refresh Resize/Move Delete Merge Format Copy

Join our newsletter Bootable CD Backup tool Upgrade

Operations

- Resize/Move partition
- Copy partition
- Merge partition
- Convert to logical
- Change label
- Change drive letter
- Set active
- Hide partition
- Delete partition
- Format partition
- Wipe partition
- View properties

Tools

- Bootable CD

Pending Operations

- Resize/Move partition (D:) on Disk2

Partition	File System	Capacity	Used	Unused	Status	Type
Disk 1 (MBR)						
C: WinXP	NTFS	31.86 GB	25.47 GB	6.39 GB	System	Primary
*	Unallocated	10.31 MB	0 Bytes	10.31 MB	None	Logical
Disk 2 (MBR)						
D: 新增磁碟區	NTFS	135.23 GB	71.75 MB	135.16 GB	None	Primary
*	Unallocated	97.66 GB	0 Bytes	97.66 GB	None	Logical

.....

Disk1
Basic MBR
31.87 GB
C: WinXP (NTFS)
31.86 GB

Disk2
Basic MBR
232.89 GB
D: 新增磁碟區 (NTFS)
135.23 GB
Unallocated
97.66 GB

Primary Unallocated

We recommend closing all other applications while running EASEUS Partition Master.

Reference

- ❑ http://tips4pc.com/format%20your%20computer/how_to_shrink_a_partition_on_you.htm
- ❑ <http://www.easeus.com/>