



System Administration Homework 6

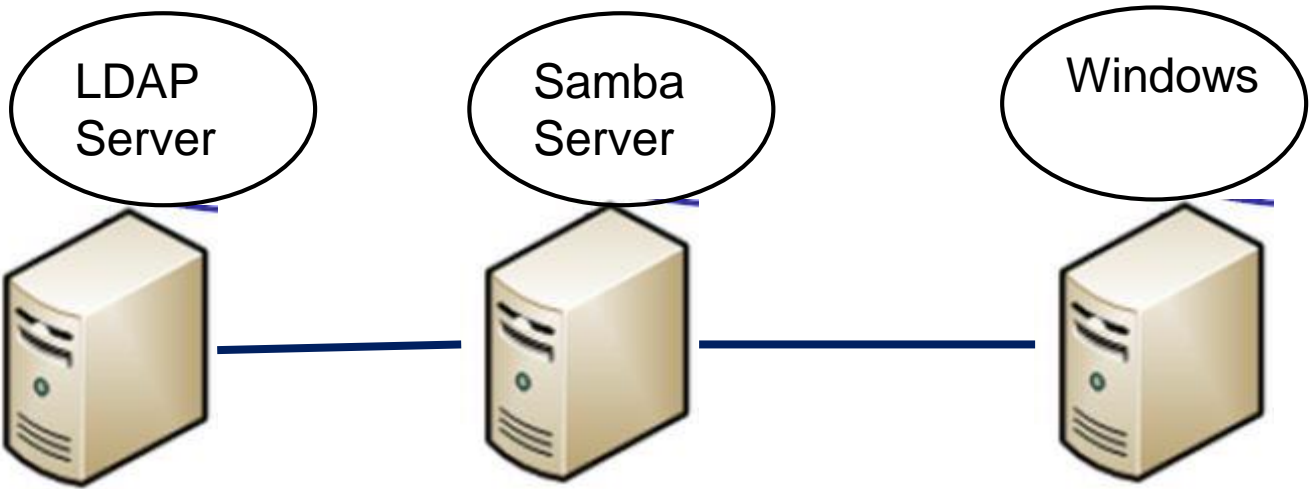
- LDAP + Samba + PC login

Shhu

2014-12-25



Briefly View





Base Requirement

Grading

- Base requirement(80%)
- Advanced requirement (20%)
- Bonus (20%)

Base requirement

❑ Machines

- saLdap: LDAP server
- saSamba: Samba server, LDAP client
- Windows: Samba client

- LDAP server and Samba server may be the same machine

Base requirement

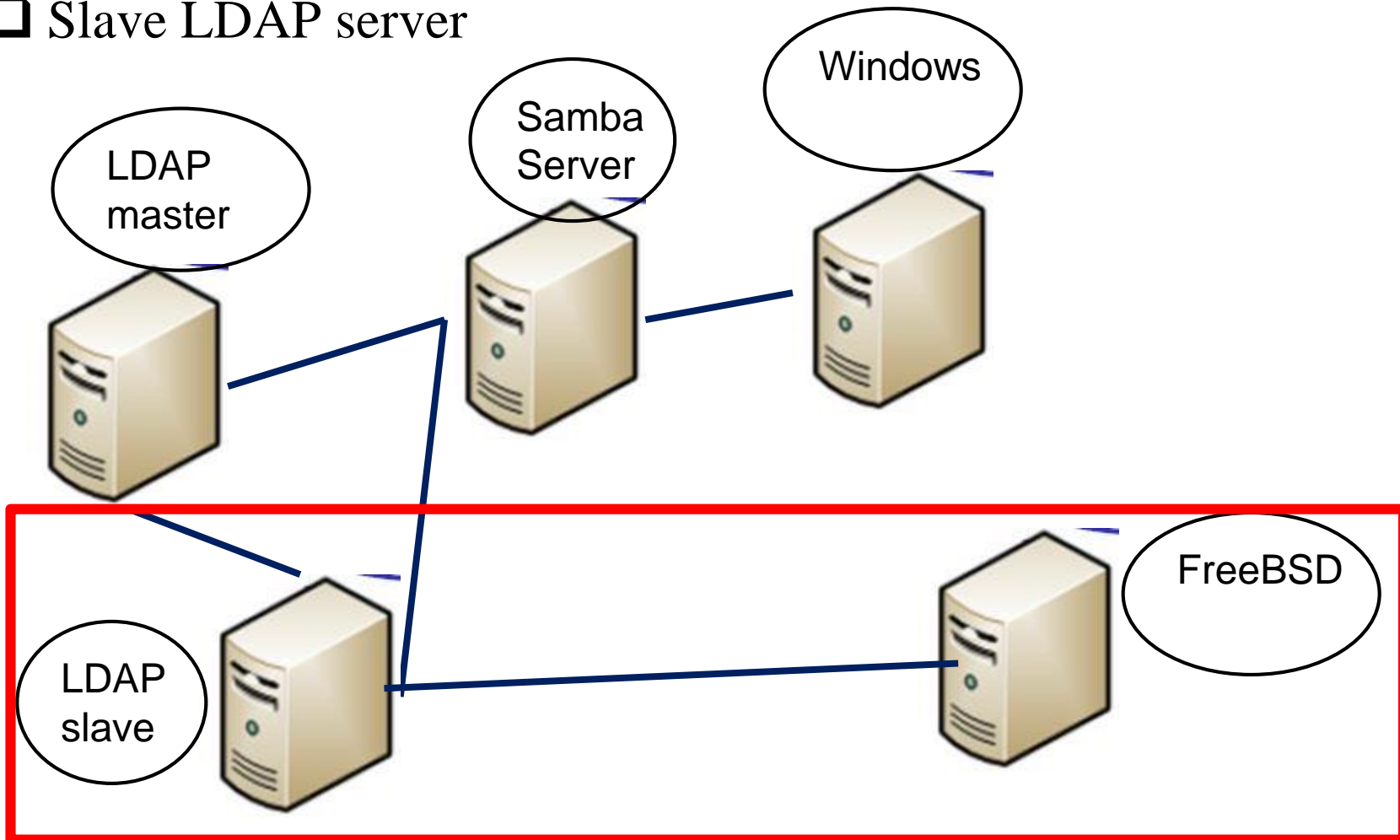
- 1 member as a team
- Auto-start all services
- Create 3 or more users account in LDAP
- User info must includes
 - telephoneNumber
 - postalAddress
 - birthdate
- Directory ACL
 - Every one can access user info
 - Self and manager can write passwd
- Add/Modify/Delete user info in LDAP server
- Password must be encrypted
- Login windows use LDAP

Advanced requirement

- PC users have own home directory
- LDAP over SSL (ldaps)

Bonus

- ❑ Login FreeBSD system use LDAP
- ❑ Slave LDAP server



Demo before 2015/1/23

Referance

- ❑ <http://www.bsdguides.org/2008/build-a-samba-pdc-with-ldap-backend/>
- ❑ http://wiki.weithenn.org/cgi-bin/wiki.pl?OpenLDAP-Samba_Auth_With_LDAP_%E8%A8%AD%E5%AE%9A